

Product datasheet for **TA330658**

C17orf59 (BORCS6) Rabbit Polyclonal Antibody

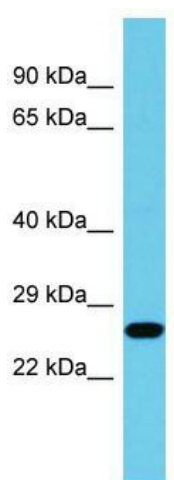
Product data:

Product Type:	Primary Antibodies
Applications:	WB
Recommended Dilution:	WB
Reactivity:	Human
Host:	Rabbit
Isotype:	IgG
Clonality:	Polyclonal
Immunogen:	The immunogen for Anti-C17orf59 antibody is: synthetic peptide directed towards the N-terminal region of Human C17orf59. Synthetic peptide located within the following region: AGLRVSGEEETENVGGANRHPRTSPKTSSCGVHRPEREALNEPGPQGT
Formulation:	Liquid. Purified antibody supplied in 1x PBS buffer with 0.09% (w/v) sodium azide and 2% sucrose.
Conjugation:	Unconjugated
Storage:	Store at -20°C as received.
Stability:	Stable for 12 months from date of receipt.
Predicted Protein Size:	25 kDa
Gene Name:	BLOC-1 related complex subunit 6
Database Link:	NP_060092 Entrez Gene 54785 Human Q96GS4
Background:	The function of this protein remains unknown.
Synonyms:	PRO2472
Note:	Human: 100%; Rat: 85%; Horse: 79%; Goat: 77%



[View online »](#)

Product images:



Host: Rabbit; Target Name: C17orf59; Sample
Tissue: MCF7 Whole Cell lysates; Antibody
Dilution: 1.0ug/ml