

Product datasheet for TA330657

ANKRD16 Rabbit Polyclonal Antibody

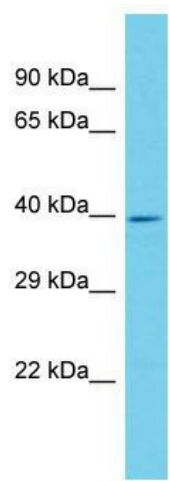
Product data:

Product Type:	Primary Antibodies
Applications:	WB
Recommended Dilution:	WB
Reactivity:	Human
Host:	Rabbit
Isotype:	IgG
Clonality:	Polyclonal
Immunogen:	The immunogen for Anti-ANKRD16 antibody is: synthetic peptide directed towards the N-terminal region of Human ANKRD16. Synthetic peptide located within the following region: CAARHGHRDVLAYLAEAWGMDIEATNRDYKRPLHEAASMGHRDCVRYLLG
Formulation:	Liquid. Purified antibody supplied in 1x PBS buffer with 0.09% (w/v) sodium azide and 2% sucrose.
Conjugation:	Unconjugated
Storage:	Store at -20°C as received.
Stability:	Stable for 12 months from date of receipt.
Predicted Protein Size:	40 kDa
Gene Name:	ankyrin repeat domain 16
Database Link:	NP_061919 Entrez Gene 54522 Human Q6P6B7
Background:	The function of this protein remains unknown.
Synonyms:	ankyrin repeat domain 16; OTTHUMP00000019019; OTTHUMP00000044872



Note: Pig: 100%; Human: 100%; Mouse: 100%; Rat: 93%; Horse: 93%; Bovine: 93%; Guinea pig: 93%; Dog: 86%; Rabbit: 86%; Zebrafish: 82%

Product images:



Host: Rabbit; Target Name: ANKRD16; Sample
Tissue: HeLa Whole cell lysates; Antibody
Dilution: 1.0ug/ml