

Product datasheet for **TA330656**

Syt17 Rabbit Polyclonal Antibody

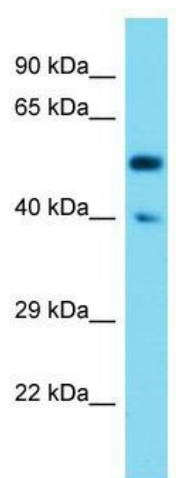
Product data:

Product Type:	Primary Antibodies
Applications:	WB
Recommended Dilution:	WB
Reactivity:	Mouse
Host:	Rabbit
Isotype:	IgG
Clonality:	Polyclonal
Immunogen:	The immunogen for Anti-Syt17 antibody is: synthetic peptide directed towards the N-terminal region of Mouse Syt17. Synthetic peptide located within the following region: AQTPPWLMASRSNDKDGDSVHTASDVPLTPRTNSPDGRRSSSDTSKSTYS
Formulation:	Liquid. Purified antibody supplied in 1x PBS buffer with 0.09% (w/v) sodium azide and 2% sucrose. <i>Note that this product is shipped as lyophilized powder to China customers.</i>
Conjugation:	Unconjugated
Storage:	Store at -20°C as received.
Stability:	Stable for 12 months from date of receipt.
Predicted Protein Size:	52 kDa
Gene Name:	synaptotagmin XVII
Database Link:	NP_619590 Entrez Gene 110058 Mouse Q920M7
Background:	The function of this protein remains unknown.
Synonyms:	SytXVII
Note:	Dog: 100%; Pig: 100%; Horse: 100%; Human: 100%; Bovine: 100%; Rabbit: 100%; Rat: 93%; Mouse: 93%; Guinea pig: 93%



[View online »](#)

Product images:



Host: Rabbit; Target Name: Syt17; Sample Tissue: Mouse Kidney lysates; Antibody Dilution: 1.0ug/ml