

Product datasheet for **TA330654**

UBE2D4 Rabbit Polyclonal Antibody

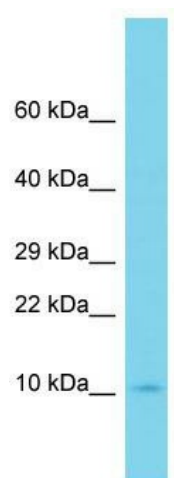
Product data:

Product Type:	Primary Antibodies
Applications:	WB
Recommended Dilution:	WB
Reactivity:	Human
Host:	Rabbit
Isotype:	IgG
Clonality:	Polyclonal
Immunogen:	The immunogen for Anti-UBE2D4 antibody is: synthetic peptide directed towards the C-terminal region of Human UBE2D4. Synthetic peptide located within the following region: ALTVSKVLLSICSLLCDPNPDDPLVPEIAHTYKADREKYNRLAREWTQKY
Formulation:	Liquid. Purified antibody supplied in 1x PBS buffer with 0.09% (w/v) sodium azide and 2% sucrose. <i>Note that this product is shipped as lyophilized powder to China customers.</i>
Conjugation:	Unconjugated
Storage:	Store at -20°C as received.
Stability:	Stable for 12 months from date of receipt.
Predicted Protein Size:	17 kDa
Gene Name:	ubiquitin conjugating enzyme E2 D4 (putative)
Database Link:	NP_057067 Entrez Gene 51619 Human Q9Y2X8
Background:	The function of this protein remains unknown.
Synonyms:	HBUCE1
Note:	Pig: 100%; Rat: 100%; Horse: 100%; Human: 100%; Rabbit: 100%; Zebrafish: 100%; Guinea pig: 100%; Dog: 85%; Mouse: 85%; Bovine: 85%; Goat: 77%
Protein Pathways:	Ubiquitin mediated proteolysis



[View online »](#)

Product images:



Host: Rabbit; Target Name: UBE2D4; Sample
Tissue: MCF7 Whole Cell lysates; Antibody
Dilution: 1.0ug/ml