

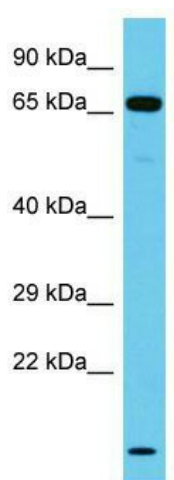
Product datasheet for TA330652

NT5DC3 Rabbit Polyclonal Antibody

Product data:

Product Type:	Primary Antibodies
Applications:	WB
Recommended Dilution:	WB
Reactivity:	Human
Host:	Rabbit
Isotype:	IgG
Clonality:	Polyclonal
Immunogen:	The immunogen for Anti-NT5DC3 antibody is: synthetic peptide directed towards the C-terminal region of Human NT5DC3. Synthetic peptide located within the following region: GLLEQMQRDAESQLVLQEWKKERKEMREMTKSFFNAQFGSLFRTDQNP
Formulation:	Liquid. Purified antibody supplied in 1x PBS buffer with 0.09% (w/v) sodium azide and 2% sucrose.
Conjugation:	Unconjugated
Storage:	Store at -20°C as received.
Stability:	Stable for 12 months from date of receipt.
Predicted Protein Size:	60 kDa
Gene Name:	5'-nucleotidase domain containing 3
Database Link:	NP_001026871 Entrez Gene 51559 Human Q86UY8
Background:	The function of this protein remains unknown.
Synonyms:	TU12B1-TY; TU12B1TY
Note:	Pig: 100%; Horse: 100%; Human: 100%; Mouse: 100%; Rabbit: 100%; Guinea pig: 100%; Dog: 93%; Bovine: 93%; Rat: 86%; Zebrafish: 77%


[View online »](#)

Product images:


Host: Rabbit; Target Name: NT5DC3; Sample
Tissue: Jurkat Whole Cell lysates; Antibody
Dilution: 1.0ug/ml