

## Product datasheet for **TA330651**

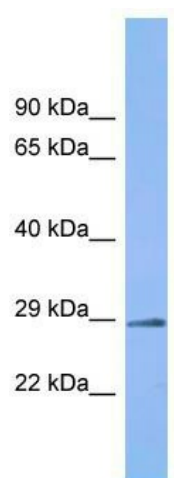
### MTRES1 Rabbit Polyclonal Antibody

#### Product data:

Product Type:	Primary Antibodies
Applications:	WB
Recommended Dilution:	WB
Reactivity:	Human
Host:	Rabbit
Isotype:	IgG
Clonality:	Polyclonal
Immunogen:	The immunogen for Anti-C6orf203 antibody is: synthetic peptide directed towards the C-terminal region of Human C6orf203. Synthetic peptide located within the following region: TLDLLIGEDKEAGTETVMRILLKKVFEEKTESEKYRVVLRWWSLKLPPK
Formulation:	Liquid. Purified antibody supplied in 1x PBS buffer with 0.09% (w/v) sodium azide and 2% sucrose. <i>Note that this product is shipped as lyophilized powder to China customers.</i>
Conjugation:	Unconjugated
Storage:	Store at -20°C as received.
Stability:	Stable for 12 months from date of receipt.
Predicted Protein Size:	26 kDa
Gene Name:	chromosome 6 open reading frame 203
Database Link:	<a href="#">NP_057571</a> <a href="#">Entrez Gene 51250 Human</a> <a href="#">Q9P0P8</a>
Background:	The function of this protein remains unknown.
Synonyms:	HSPC230; PRED31
Note:	Horse: 100%; Human: 100%; Rabbit: 100%; Dog: 93%; Pig: 79%; Rat: 79%; Guinea pig: 79%



[View online »](#)

**Product images:**

Host: Rabbit; Target Name: C6orf203; Sample  
Tissue: Fetal Kidney lysates; Antibody Dilution:  
1.0ug/ml