

Product datasheet for **TA330650**

C5orf45 (MRNIP) Rabbit Polyclonal Antibody

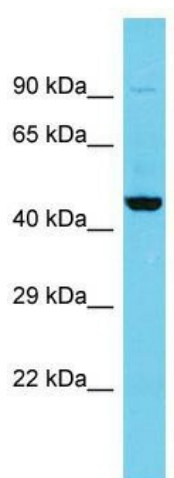
Product data:

Product Type:	Primary Antibodies
Applications:	WB
Recommended Dilution:	WB
Reactivity:	Human
Host:	Rabbit
Isotype:	IgG
Clonality:	Polyclonal
Immunogen:	The immunogen for Anti-C5orf45 antibody is: synthetic peptide directed towards the N-terminal region of Human C5orf45. Synthetic peptide located within the following region: QGQVSELPLRSLEETVSASEEENVGHQQAGNVKQQEKSQPESRWLKYLE
Formulation:	Liquid. Purified antibody supplied in 1x PBS buffer with 0.09% (w/v) sodium azide and 2% sucrose.
Conjugation:	Unconjugated
Storage:	Store at -20°C as received.
Stability:	Stable for 12 months from date of receipt.
Predicted Protein Size:	38 kDa
Gene Name:	chromosome 5 open reading frame 45
Database Link:	NP_057259 Entrez Gene 51149 Human Q6NTE8
Background:	The function of this protein remains unknown.
Synonyms:	DKFZp686L2452; MGC65027; MGC78537
Note:	Human: 100%



[View online »](#)

Product images:



Host: Rabbit; Target Name: C5orf45; Sample
Tissue: Fetal Kidney lysates; Antibody Dilution:
1.0ug/ml