

## Product datasheet for **TA330648**

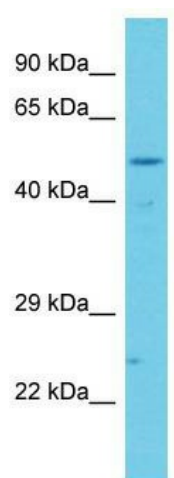
### CCDC41 (CEP83) Rabbit Polyclonal Antibody

#### Product data:

Product Type:	Primary Antibodies
Applications:	WB
Recommended Dilution:	WB
Reactivity:	Human
Host:	Rabbit
Isotype:	IgG
Clonality:	Polyclonal
Immunogen:	The immunogen for Anti-CCDC41 antibody is: synthetic peptide directed towards the C-terminal region of Human CCDC41. Synthetic peptide located within the following region: SQA EKAQLEAEKTLEEKQIQWLEEKHKLHERITDREKY NQAKEKLQRAA
Formulation:	Liquid. Purified antibody supplied in 1x PBS buffer with 0.09% (w/v) sodium azide and 2% sucrose. <i>Note that this product is shipped as lyophilized powder to China customers.</i>
Conjugation:	Unconjugated
Storage:	Store at -20°C as received.
Stability:	Stable for 12 months from date of receipt.
Predicted Protein Size:	52 kDa
Gene Name:	centrosomal protein 83
Database Link:	<a href="#">NP_057206</a> <a href="#">Entrez Gene 51134 Human</a> <a href="#">Q9Y592</a>
Background:	The function of this protein remains unknown.
Synonyms:	CCDC41; NPHP18; NY-REN-58
Note:	Dog: 100%; Pig: 100%; Rat: 100%; Horse: 100%; Human: 100%; Mouse: 100%; Bovine: 100%; Guinea pig: 100%; Rabbit: 93%



[View online »](#)

**Product images:**

Host: Rabbit; Target Name: CCDC41; Sample Tissue: Jurkat Whole Cell lysates; Antibody Dilution: 1.0ug/ml; CCDC41 is supported by BioGPS gene expression data to be expressed in Jurkat