

## Product datasheet for **TA330646**

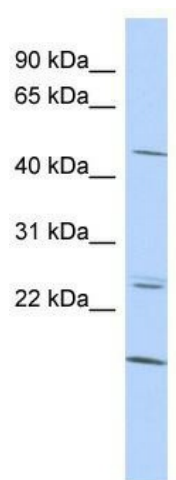
### BARHL2 Rabbit Polyclonal Antibody

#### Product data:

Product Type:	Primary Antibodies
Applications:	WB
Recommended Dilution:	WB
Reactivity:	Human
Host:	Rabbit
Isotype:	IgG
Clonality:	Polyclonal
Immunogen:	The immunogen for anti-BARHL2 antibody: synthetic peptide directed towards the middle region of human BARHL2. Synthetic peptide located within the following region: DREITSSRESPPVRAKKPRKARTAFSDHQLNQLERSFERQKYL SVQDRMD
Formulation:	Liquid. Purified antibody supplied in 1x PBS buffer with 0.09% (w/v) sodium azide and 2% sucrose.
Conjugation:	Unconjugated
Storage:	Store at -20°C as received.
Stability:	Stable for 12 months from date of receipt.
Predicted Protein Size:	42 kDa
Gene Name:	BarH like homeobox 2
Database Link:	<a href="#">NP_064447</a> <a href="#">Entrez Gene 343472 Human</a> <a href="#">Q9NY43</a>
Background:	BARHL2 and BARHL1 are two homeobox genes in mouse and human, which are highly related to the Bar Drosophila genes.
Synonyms:	BarH-like 2; BarH-like homeobox 2; OTTHUMP00000011704
Note:	Dog: 100%; Pig: 100%; Rat: 100%; Horse: 100%; Human: 100%; Mouse: 100%; Bovine: 100%; Rabbit: 100%; Zebrafish: 100%; Guinea pig: 100%



[View online »](#)

**Product images:**


WB Suggested Anti-BARHL2 Antibody Titration:  
0.2-1 ug/ml; ELISA Titer: 1:1562500; Positive  
Control: HepG2 cell lysate