

Product datasheet for **TA330640**

Homeo box C10 (HOXC10) Rabbit Polyclonal Antibody

Product data:

Product Type:	Primary Antibodies
Applications:	WB
Recommended Dilution:	WB
Reactivity:	Human
Host:	Rabbit
Isotype:	IgG
Clonality:	Polyclonal
Immunogen:	The immunogen for anti-HOXC10 antibody: synthetic peptide directed towards the N terminal of human HOXC10. Synthetic peptide located within the following region: GSDFNCGVMRGCGLAPSLSKRDEGSSPSLALNTYPSYLSQLDSWGDPKAA
Formulation:	Liquid. Purified antibody supplied in 1x PBS buffer with 0.09% (w/v) sodium azide and 2% sucrose. <i>Note that this product is shipped as lyophilized powder to China customers.</i>
Conjugation:	Unconjugated
Storage:	Store at -20°C as received.
Stability:	Stable for 12 months from date of receipt.
Predicted Protein Size:	38 kDa
Gene Name:	homeobox C10
Database Link:	NP_059105 Entrez Gene 3226 Human Q9NYD6



[View online »](#)

Background:

HOXC10 belongs to the homeobox family. The homeobox family is a highly conserved family of transcription factors that play an important role in morphogenesis in all multicellular organisms. Mammals possess four similar homeobox gene clusters, HOXA, HOXB, HOXC and HOXD, which are located on different chromosomes and consist of 9 to 11 genes arranged in tandem. This gene is one of several homeobox HOXC genes located in a cluster on chromosome 12. The protein level is controlled during cell differentiation and proliferation, which may indicate this protein has a role in origin activation. This gene belongs to the homeobox family of genes. The homeobox genes encode a highly conserved family of transcription factors that play an important role in morphogenesis in all multicellular organisms. Mammals possess four similar homeobox gene clusters, HOXA, HOXB, HOXC and HOXD, which are located on different chromosomes and consist of 9 to 11 genes arranged in tandem. This gene is one of several homeobox HOXC genes located in a cluster on chromosome 12. The protein level is controlled during cell differentiation and proliferation, which may indicate this protein has a role in origin activation.

Synonyms:

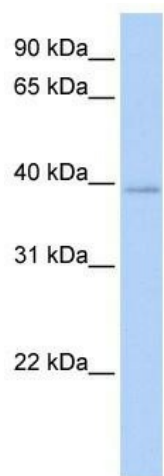
HOX3I

Note:

Human: 100%; Dog: 86%; Pig: 86%; Rat: 86%; Mouse: 86%; Rabbit: 86%; Guinea pig: 86%

Protein Families:

Transcription Factors

Product images:

WB Suggested Anti-HOXC10 Antibody Titration:
0.2-1 ug/ml; ELISA Titer: 1:62500; Positive Control:
Human heart