

Product datasheet for **TA330635**

HMX1 Rabbit Polyclonal Antibody

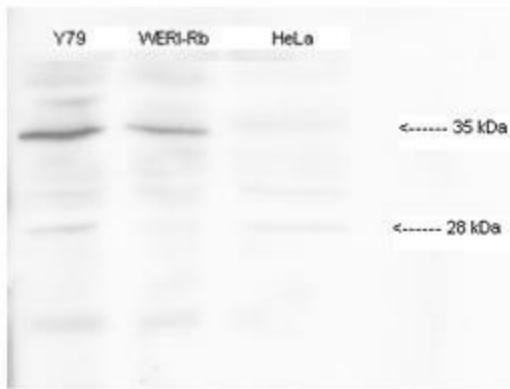
Product data:

Product Type:	Primary Antibodies
Applications:	WB
Recommended Dilution:	WB
Reactivity:	Human
Host:	Rabbit
Isotype:	IgG
Clonality:	Polyclonal
Immunogen:	The immunogen for anti-HMX1 antibody: synthetic peptide directed towards the middle region of human HMX1. Synthetic peptide located within the following region: AGETRGGVGVGGGRKKKTRTVFSRSQVFQLESTFDLKRYLSTAERAGLAA
Formulation:	Liquid. Purified antibody supplied in 1x PBS buffer with 0.09% (w/v) sodium azide and 2% sucrose. <i>Note that this product is shipped as lyophilized powder to China customers.</i>
Conjugation:	Unconjugated
Storage:	Store at -20°C as received.
Stability:	Stable for 12 months from date of receipt.
Predicted Protein Size:	39 kDa
Gene Name:	H6 family homeobox 1
Database Link:	NP_061815 Entrez Gene 3166 Human Q9NP08
Background:	HMX1 acts as a transcriptional antagonist and is part of the Hmx family of homeodomain proteins which are predominately expressed in discrete regions of developing sensory tissues.
Synonyms:	H6; NKX5-3
Note:	Human: 100%; Dog: 93%; Pig: 93%; Rat: 93%; Mouse: 93%; Bovine: 93%; Guinea pig: 93%; Horse: 91%; Zebrafish: 86%; Rabbit: 79%

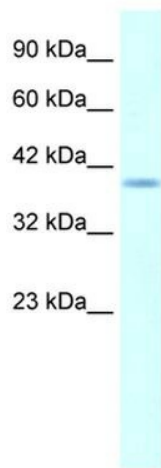


[View online »](#)

Product images:



HMX1 antibody - middle region validated by WB using Y79, WERI- (human retinoblastoma cell lines), HeLa- (human papilloma virus cell line) at 1:1000.



WB Suggested Anti-HMX1 Antibody Titration: 5.0ug/ml Positive Control: Daudi HMX1 is supported by BioGPS gene expression data to be expressed in Daudi



Rabbit Anti- HMX1 Antibody
Catalog Number: TA330635

Lane: Daudi Cell Lysate

Antibody Titration: 4.0µg/ml
Gel Concentration: 12%

WB Suggested Anti-HMX1 Antibody Titration: 4.0 ug/ml; Positive Control: Daudi cell lysate HMX1 is supported by BioGPS gene expression data to be expressed in Daudi