

Product datasheet for **TA330632**

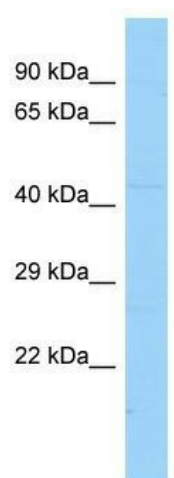
Mnx1 Rabbit Polyclonal Antibody

Product data:

| | |
|-------------------------|--|
| Product Type: | Primary Antibodies |
| Applications: | WB |
| Recommended Dilution: | WB |
| Reactivity: | Mouse |
| Host: | Rabbit |
| Isotype: | IgG |
| Clonality: | Polyclonal |
| Immunogen: | The immunogen for Anti-Mnx1 antibody is: synthetic peptide directed towards the middle region of Mouse Mnx1. Synthetic peptide located within the following region: QQLLELEHQFKLNKYLSPKRFEVATSLMLTETQVKIWFQNRMMKWKRSK |
| Formulation: | Liquid. Purified antibody supplied in 1x PBS buffer with 0.09% (w/v) sodium azide and 2% sucrose. <i>Note that this product is shipped as lyophilized powder to China customers.</i> |
| Conjugation: | Unconjugated |
| Storage: | Store at -20°C as received. |
| Stability: | Stable for 12 months from date of receipt. |
| Predicted Protein Size: | 41 kDa |
| Gene Name: | motor neuron and pancreas homeobox 1 |
| Database Link: | NP_064328 Entrez Gene 15285 Mouse |
| Background: | The function of this protein remains unknown. |
| Synonyms: | HB9; HLXB9; HOXHB9; SCRA1 |
| Note: | Human: 100%; Dog: 92%; Pig: 92%; Rat: 92%; Horse: 92%; Mouse: 92%; Bovine: 92%; Rabbit: 92%; Zebrafish: 92%; Guinea pig: 92% |



[View online »](#)

Product images:

WB Suggested Anti-Mnx1 Antibody; Titration: 1.0 ug/ml; Positive Control: Mouse Testis