

## Product datasheet for TA330629

### HDAC2 Rabbit Polyclonal Antibody

#### Product data:

Product Type:	Primary Antibodies
Applications:	IHC, WB
Recommended Dilution:	WB, assay
Reactivity:	Human
Host:	Rabbit
Isotype:	IgG
Clonality:	Polyclonal
Immunogen:	The immunogen for anti-HDAC2 antibody: synthetic peptide directed towards the middle region of human HDAC2. Synthetic peptide located within the following region: HKKGAKKARIEEDKKETEDKKTVDVKEEDKSKDNSGEKTDTKGKSEQLSN
Formulation:	Liquid. Purified antibody supplied in 1x PBS buffer with 0.09% (w/v) sodium azide and 2% sucrose. <i>Note that this product is shipped as lyophilized powder to China customers.</i>
Conjugation:	Unconjugated
Storage:	Store at -20°C as received.
Stability:	Stable for 12 months from date of receipt.
Predicted Protein Size:	65 kDa
Gene Name:	histone deacetylase 2
Database Link:	<a href="#">NP_001518</a> <a href="#">Entrez Gene 3066 Human</a> <a href="#">Q92769</a>
Background:	Histone deacetylase 2 (HDAC2), or transcriptional regulator homolog RPD3 L1, is highly homologous to the yeast transcription factor RPD3 (reduced potassium dependency 3) gene. As in yeast, human HDA2 is likely to be involved in regulating chromatin structure during transcription. It has been implicated to associate with YY1, a mammalian zinc-finger transcription factor, which negatively regulates transcription by tethering RPD3 to DNA as a cofactor. This process is highly conserved from yeast to human.
Synonyms:	HD2; RPD3; YAF1



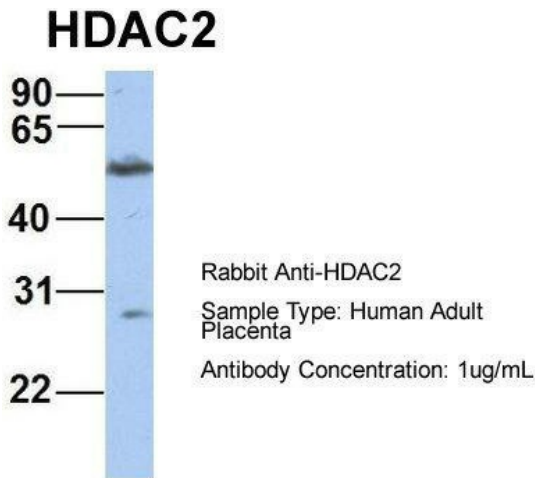
[View online »](#)

**Note:** Pig: 100%; Rat: 100%; Horse: 100%; Human: 100%; Bovine: 100%; Guinea pig: 100%; Dog: 93%; Mouse: 93%; Rabbit: 93%

**Protein Families:** Druggable Genome, Stem cell - Pluripotency, Transcription Factors

**Protein Pathways:** Cell cycle, Chronic myeloid leukemia, Huntington's disease, Notch signaling pathway, Pathways in cancer

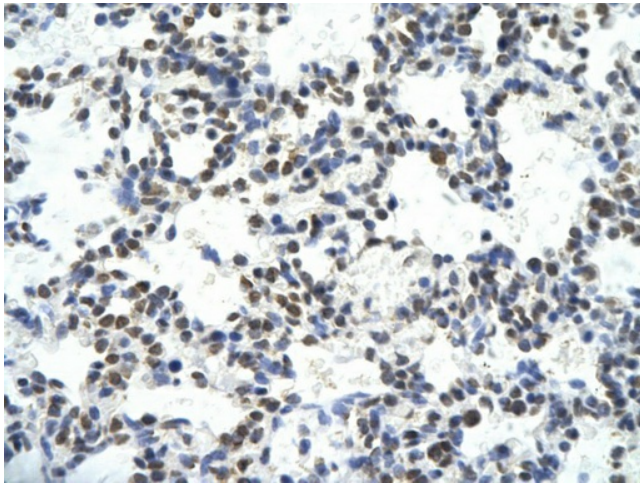
**Product images:**



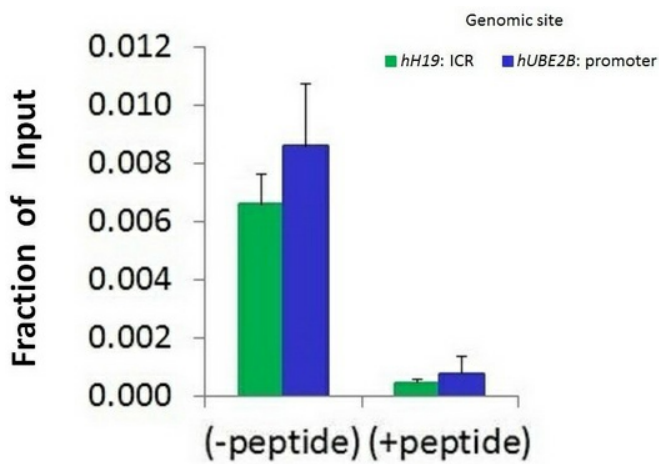
Host: Rabbit; Target Name: HDAC2; Sample Tissue: Human Adult Placenta; Antibody Dilution: 1.0ug/ml



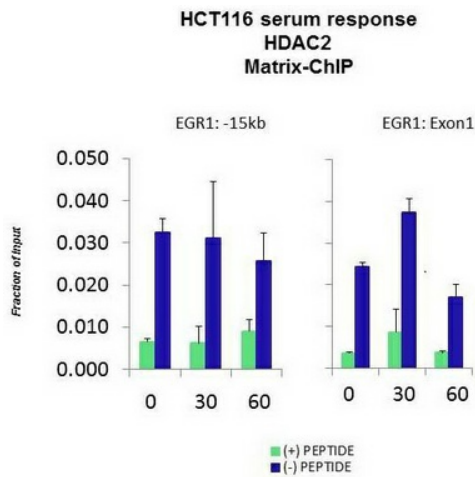
WB Suggested Anti-HDAC2 Antibody Titration: 0.2-1 ug/ml; ELISA Titer: 1:312500; Positive Control: 293T cell lysate HDAC2 is supported by BioGPS gene expression data to be expressed in HEK293T



Rabbit Anti-HDAC2 antibody; Paraffin Embedded Tissue: Human Lung cell; Cellular Data: Epithelial cells of renal tubule; Antibody Concentration: 4.0-8.0 ug/ml; Magnification: 400X



Chromatin Immunoprecipitation (ChIP) Using HDAC2 antibody - middle region and HCT116 Cells



Quiescent human colon carcinoma HCT116 cultures were treated with 10% FBS for three time points (0, 15, 30min) or (0, 30, 60min) were used in Matrix-ChIP and real-time PCR assays at EGR1 gene (Exon1) and 15kb upstream site.