

Product datasheet for **TA330627**

TBX21 Rabbit Polyclonal Antibody

Product data:

| | |
|-------------------------|--|
| Product Type: | Primary Antibodies |
| Applications: | IHC, WB |
| Recommended Dilution: | WB, IHC |
| Reactivity: | Human |
| Host: | Rabbit |
| Isotype: | IgG |
| Clonality: | Polyclonal |
| Immunogen: | The immunogen for anti-TBX21 antibody: synthetic peptide directed towards the middle region of human TBX21. Synthetic peptide located within the following region: SIPSPPGPNCQFLGGDHYSPLLPNQYPVPSRFYDLPDLPQAKDVWPQAYWL |
| Formulation: | Liquid. Purified antibody supplied in 1x PBS buffer with 0.09% (w/v) sodium azide and 2% sucrose. <i>Note that this product is shipped as lyophilized powder to China customers.</i> |
| Conjugation: | Unconjugated |
| Storage: | Store at -20°C as received. |
| Stability: | Stable for 12 months from date of receipt. |
| Predicted Protein Size: | 58 kDa |
| Gene Name: | T-box 21 |
| Database Link: | NP_037483 Entrez Gene 30009 Human Q9UL17 |
| Background: | TBX21 is a member of a phylogenetically conserved family of genes that share a common DNA-binding domain, the T-box. T-box genes encode transcription factors involved in the regulation of developmental processes. It is the human ortholog of mouse Tbx21/Tbet gene. Studies in mouse show that Tbx21 protein is a Th1 cell-specific transcription factor that controls the expression of the hallmark Th1 cytokine, interferon-gamma (IFNG). Expression of the human ortholog also correlates with IFNG expression in Th1 and natural killer cells, suggesting a role for this gene in initiating Th1 lineage development from naive Th precursor cells. |



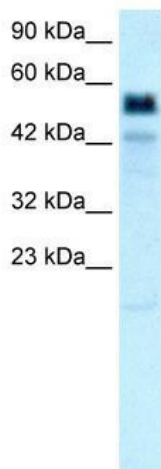
[View online »](#)

Synonyms: T-bet; T-PET; TBET; TBLYM

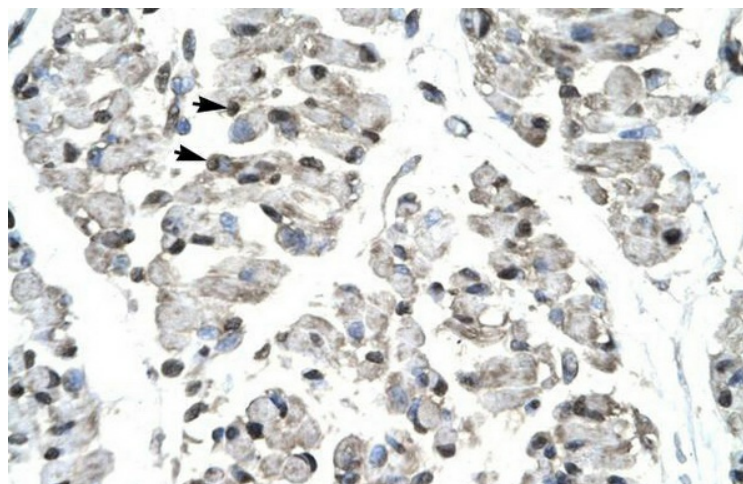
Note: Dog: 100%; Pig: 100%; Human: 100%; Bovine: 100%; Mouse: 93%; Rat: 86%; Rabbit: 86%; Guinea pig: 86%

Protein Families: Druggable Genome, Transcription Factors

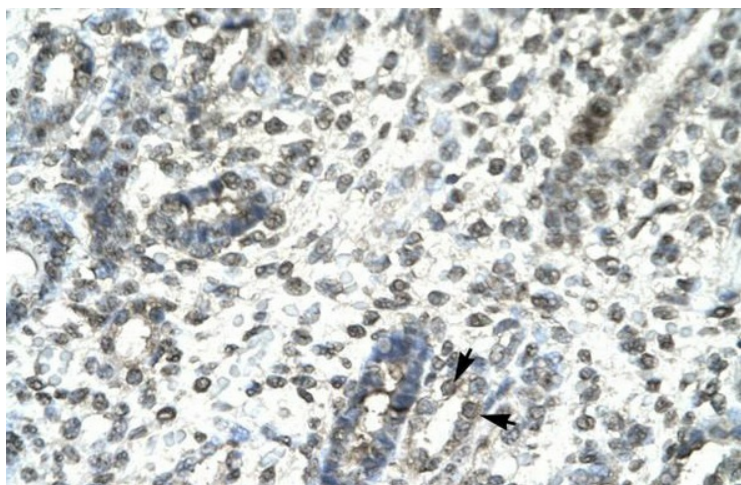
Product images:



WB Suggested Anti-TBX21 Antibody Titration: 0.2-1 ug/ml; Positive Control: Human Liver



Human Skeletal Muscle



Human kidney