

## Product datasheet for **TA330626**

### Ceramide synthase 2 (CERS2) Rabbit Polyclonal Antibody

#### Product data:

Product Type:	Primary Antibodies
Applications:	IHC, WB
Recommended Dilution:	WB, IHC
Reactivity:	Human
Host:	Rabbit
Isotype:	IgG
Clonality:	Polyclonal
Immunogen:	The immunogen for anti-LASS2 antibody: synthetic peptide directed towards the N terminal of human LASS2. Synthetic peptide located within the following region: EKTRLRAPPNATLEHFYLTSGKQPKQVEVELLSRQSGLSGRQVERWFRRR
Formulation:	Liquid. Purified antibody supplied in 1x PBS buffer with 0.09% (w/v) sodium azide and 2% sucrose. <i>Note that this product is shipped as lyophilized powder to China customers.</i>
Conjugation:	Unconjugated
Storage:	Store at -20°C as received.
Stability:	Stable for 12 months from date of receipt.
Predicted Protein Size:	45 kDa
Gene Name:	ceramide synthase 2
Database Link:	<a href="#">NP_071358</a> <a href="#">Entrez Gene 29956 Human</a> <a href="#">Q96G23</a>
Background:	LASS2 is a protein that has sequence similarity to yeast longevity assurance gene 1. Mutation or overexpression of the related gene in yeast has been shown to alter yeast lifespan. The human protein may play a role in the regulation of cell growth. This gene encodes a protein that has sequence similarity to yeast longevity assurance gene 1. Mutation or overexpression of the related gene in yeast has been shown to alter yeast lifespan. The human protein may play a role in the regulation of cell growth. Alternatively spliced transcript variants encoding the same protein have been described.



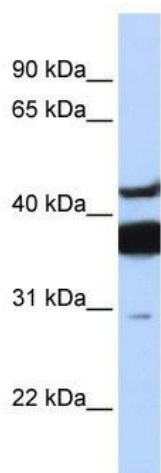
[View online »](#)

**Synonyms:** L3; LASS2; SP260; TMSG1

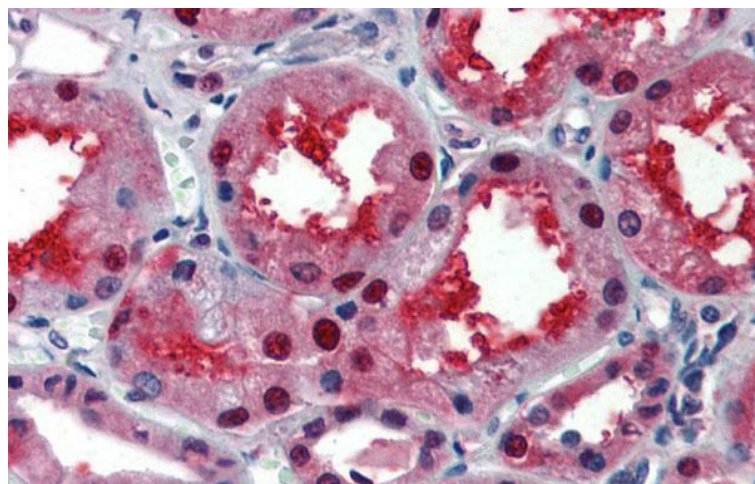
**Note:** Pig: 100%; Human: 100%; Guinea pig: 100%; Dog: 93%; Rat: 93%; Mouse: 93%; Rabbit: 93%; Horse: 92%; Bovine: 86%

**Protein Families:** Transcription Factors, Transmembrane

### Product images:



WB Suggested Anti-LASS2 Antibody Titration: 0.2-1 ug/ml; ELISA Titer: 1:312500; Positive Control: Human brain



Immunohistochemistry with Human kidney lysate tissue at an antibody concentration of 5.0ug/ml using anti-LASS2 antibody