

## Product datasheet for **TA330623**

### CRTR1 (TFCP2L1) Rabbit Polyclonal Antibody

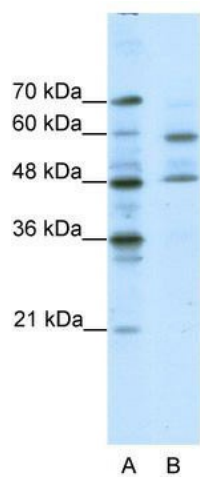
#### Product data:

Product Type:	Primary Antibodies
Applications:	WB
Recommended Dilution:	WB
Reactivity:	Human
Host:	Rabbit
Isotype:	IgG
Clonality:	Polyclonal
Immunogen:	The immunogen for anti-TFCP2L1 antibody: synthetic peptide directed towards the middle region of human TFCP2L1. Synthetic peptide located within the following region: HGGEKGVPRVQIDTFKQNGEYTEHLHSASCQIKVFKPKGADRKQKTD
Formulation:	Liquid. Purified antibody supplied in 1x PBS buffer with 0.09% (w/v) sodium azide and 2% sucrose.
Conjugation:	Unconjugated
Storage:	Store at -20°C as received.
Stability:	Stable for 12 months from date of receipt.
Predicted Protein Size:	55 kDa
Gene Name:	transcription factor CP2-like 1
Database Link:	<a href="#">NP_055368</a> <a href="#">Entrez Gene 29842 Human</a> <a href="#">Q9NZI6</a>
Background:	TFCP2L1 is a transcriptional suppressor. TFCP2L1 may suppress UBP1-mediated transcriptional activation. It modulates the placental expression of CYP11A1.
Synonyms:	CRTR1; LBP-9; LBP9
Note:	Dog: 100%; Pig: 100%; Rat: 100%; Horse: 100%; Human: 100%; Mouse: 100%; Bovine: 100%; Rabbit: 100%; Guinea pig: 100%; Zebrafish: 93%
Protein Families:	Transcription Factors



[View online »](#)

## Product images:



WB Suggested Anti-TFCP2L1 Antibody Titration:  
0.2-1 ug/ml; Positive Control: Jurkat cell lysate