

## Product datasheet for **TA330622**

### Activator of basal transcription 1 (ABT1) Rabbit Polyclonal Antibody

#### Product data:

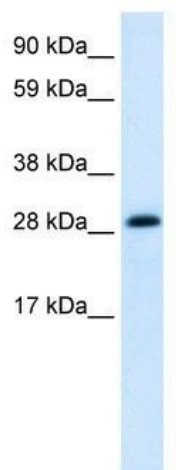
Product Type:	Primary Antibodies
Applications:	IHC, WB
Recommended Dilution:	WB, IHC
Reactivity:	Human
Host:	Rabbit
Isotype:	IgG
Clonality:	Polyclonal
Immunogen:	The immunogen for anti-ABT1 antibody: synthetic peptide directed towards the middle region of human ABT1. Synthetic peptide located within the following region: EVAQAKRETD FYLQSV ERGQRFLAADGDPARPDG SWTFAQRPT EQELRAR
Formulation:	Liquid. Purified antibody supplied in 1x PBS buffer with 0.09% (w/v) sodium azide and 2% sucrose. <i>Note that this product is shipped as lyophilized powder to China customers.</i>
Conjugation:	Unconjugated
Storage:	Store at -20°C as received.
Stability:	Stable for 12 months from date of receipt.
Predicted Protein Size:	31 kDa
Gene Name:	activator of basal transcription 1
Database Link:	<a href="#">NP_037507</a> <a href="#">Entrez Gene 29777 Human Q9ULW3</a>
Background:	Basal transcription of genes by RNA polymerase II requires the interaction of TATA-binding protein (TBP) with the core region of class II promoters. Studies in mouse suggest that the protein encoded by ABT1 likely activates basal transcription from class II promoters by interaction with TBP and the class II promoter DNA.
Synonyms:	hABT1
Note:	Horse: 100%; Human: 100%; Dog: 93%; Pig: 93%; Rat: 93%; Bovine: 93%; Rabbit: 93%; Guinea pig: 93%; Mouse: 86%; Zebrafish: 77%



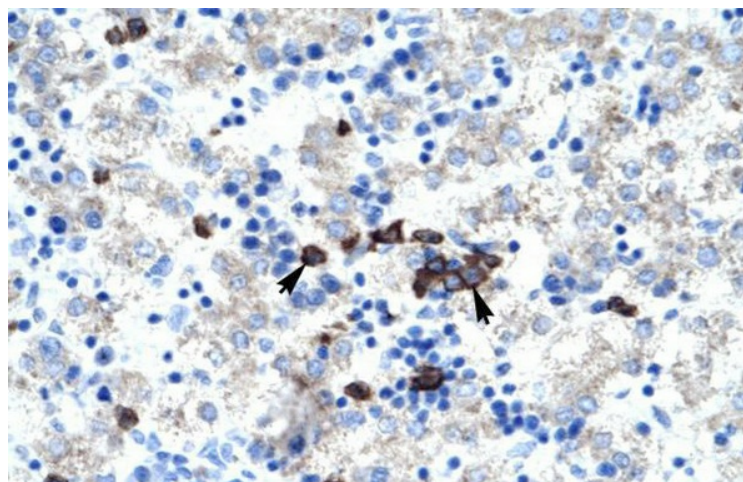
[View online »](#)

Protein Families: Transcription Factors

### Product images:



WB Suggested Anti-ABT1 Antibody Titration:  
1.25ug/ml; Positive Control: Human heart



Human kidney