

## Product datasheet for **TA330620**

### Metabotropic Glutamate Receptor 6 (GRM6) Rabbit Polyclonal Antibody

#### Product data:

Product Type:	Primary Antibodies
Applications:	WB
Recommended Dilution:	WB
Reactivity:	Human, Mouse
Host:	Rabbit
Isotype:	IgG
Clonality:	Polyclonal
Immunogen:	The immunogen for anti-GRM6 antibody: synthetic peptide directed towards the C terminal of human GRM6. Synthetic peptide located within the following region: ITFSLTSLQVVGMIAWLGARPPHSVIDYEEQRTVDPEQARGVLKCDMSDL
Formulation:	Liquid. Purified antibody supplied in 1x PBS buffer with 0.09% (w/v) sodium azide and 2% sucrose. <i>Note that this product is shipped as lyophilized powder to China customers.</i>
Conjugation:	Unconjugated
Storage:	Store at -20°C as received.
Stability:	Stable for 12 months from date of receipt.
Predicted Protein Size:	95 kDa
Gene Name:	glutamate metabotropic receptor 6
Database Link:	<a href="#">NP_000834</a> <a href="#">Entrez Gene 108072 Mouse</a> <a href="#">Entrez Gene 2916 Human</a> <a href="#">O15303</a>
Background:	L-glutamate is the major excitatory neurotransmitter in the central nervous system and activates both ionotropic and metabotropic glutamate receptors. The metabotropic glutamate receptors are a family of G protein-coupled receptors, that have been divided into 3 groups on the basis of sequence homology, putative signal transduction mechanisms, and pharmacologic properties. GRM6 is part of Group III which is linked to the inhibition of the cyclic AMP cascade.
Synonyms:	CSNB1B; GPRC1F; mGlu6; MGLUR6



[View online »](#)

**Note:** Dog: 100%; Pig: 100%; Rat: 100%; Horse: 100%; Human: 100%; Mouse: 100%; Yeast: 100%; Bovine: 100%; Rabbit: 100%; Guinea pig: 100%; Zebrafish: 86%

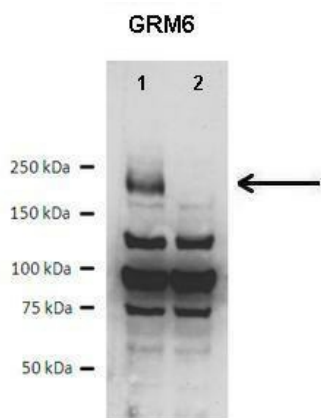
**Protein Families:** Druggable Genome, Transmembrane

**Protein Pathways:** Neuroactive ligand-receptor interaction

**Product images:**

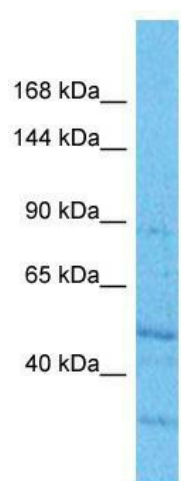


WB Suggested Anti-GRM6 Antibody Titration: 0.2-1 ug/ml; Positive Control: Human brain



Lanes: ; Lane 1: 10 ug WT mouse retina lysate; Lane 2: 10 ug GRM6 knockout mouse retina lysate; Primary Antibody Dilution: ; 1:1000; Secondary Antibody: ; Anti-rabbit HRP; Secondary Antibody Dilution: ; 1:10000; Gene Name: ; GRM6; Submitted by: ; Anonymous;

See Immunoblot 2 Data and Customer Feedback for more information



Host: Rabbit; Target Name: GRM6; Sample  
Tissue: HepG2 Whole Cell lysates; Antibody  
Dilution: 1.0ug/ml