

Product datasheet for **TA330618**

KLF15 Rabbit Polyclonal Antibody

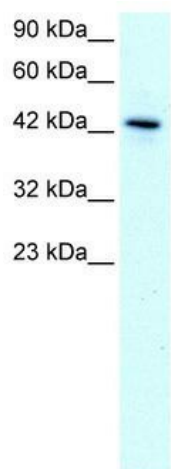
Product data:

Product Type:	Primary Antibodies
Applications:	IHC, WB
Recommended Dilution:	WB, IHC
Reactivity:	Human
Host:	Rabbit
Isotype:	IgG
Clonality:	Polyclonal
Immunogen:	The immunogen for anti-KLF15 antibody: synthetic peptide directed towards the N terminal of human KLF15. Synthetic peptide located within the following region: DASSPCSCSSPDSQALCSCYGGGLGTESQDSILDFLLSQATLGSGGGSGS
Formulation:	Liquid. Purified antibody supplied in 1x PBS buffer with 0.09% (w/v) sodium azide and 2% sucrose. <i>Note that this product is shipped as lyophilized powder to China customers.</i>
Conjugation:	Unconjugated
Storage:	Store at -20°C as received.
Stability:	Stable for 12 months from date of receipt.
Predicted Protein Size:	44 kDa
Gene Name:	Kruppel-like factor 15
Database Link:	NP_054798 Entrez Gene 28999 Human Q9UIH9
Background:	KLF15 is a Cys2-His2 zinc finger gene. It is found abundantly expressed in the liver, kidneys, heart, and skeletal muscle.
Synonyms:	KKLF
Note:	Human: 100%; Rabbit: 93%; Horse: 92%; Dog: 86%; Pig: 86%; Rat: 86%; Bovine: 86%; Guinea pig: 85%; Mouse: 79%
Protein Families:	Transcription Factors

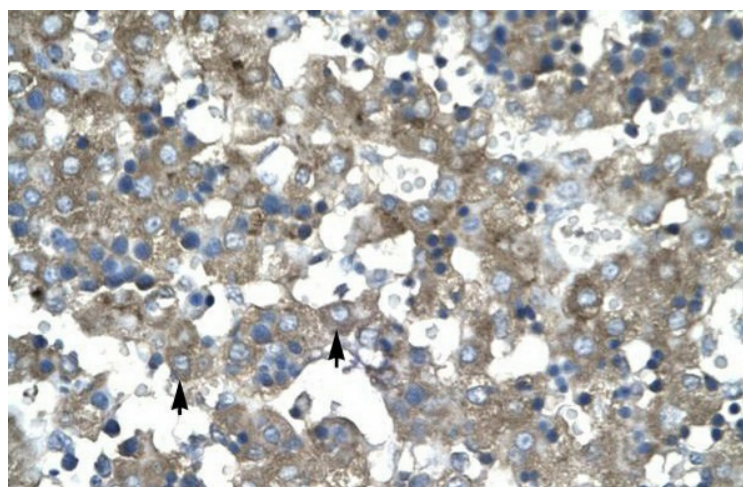


[View online »](#)

Product images:



WB Suggested Anti-KLF15 Antibody Titration: 1.0-2.0ug/ml; Positive Control: HepG2 cell lysate



Human Liver