

Product datasheet for **TA330617**

HIPK2 Rabbit Polyclonal Antibody

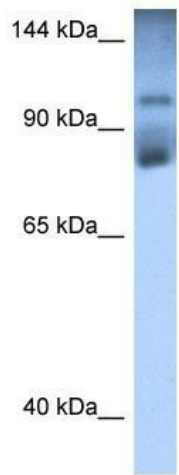
Product data:

Product Type:	Primary Antibodies
Applications:	IHC, WB
Recommended Dilution:	WB, IHC
Reactivity:	Human, Mouse
Host:	Rabbit
Isotype:	IgG
Clonality:	Polyclonal
Immunogen:	The immunogen for Anti-HIPK2 antibody is: synthetic peptide directed towards the middle region of Human HIPK2. Synthetic peptide located within the following region: MWSLGCVIAELFLGWPLYPGASEYDQIRYISQTQGLPAEYLLSAGTKTTR
Formulation:	Liquid. Purified antibody supplied in 1x PBS buffer with 0.09% (w/v) sodium azide and 2% sucrose. <i>Note that this product is shipped as lyophilized powder to China customers.</i>
Conjugation:	Unconjugated
Storage:	Store at -20°C as received.
Stability:	Stable for 12 months from date of receipt.
Predicted Protein Size:	120 kDa
Gene Name:	homeodomain interacting protein kinase 2
Database Link:	NP_073577 Entrez Gene 15258 Mouse Entrez Gene 28996 Human Q9H2X6
Background:	HIPK2 is a conserved serine/threonine nuclear kinase that interacts with homeodomain transcription factors.
Synonyms:	PRO0593
Note:	Dog: 100%; Pig: 100%; Rat: 100%; Horse: 100%; Human: 100%; Mouse: 100%; Guinea pig: 100%; Rabbit: 93%; Zebrafish: 87%; Bovine: 86%
Protein Families:	Druggable Genome, Protein Kinase, Transcription Factors

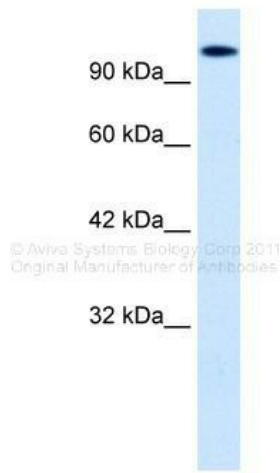


[View online »](#)

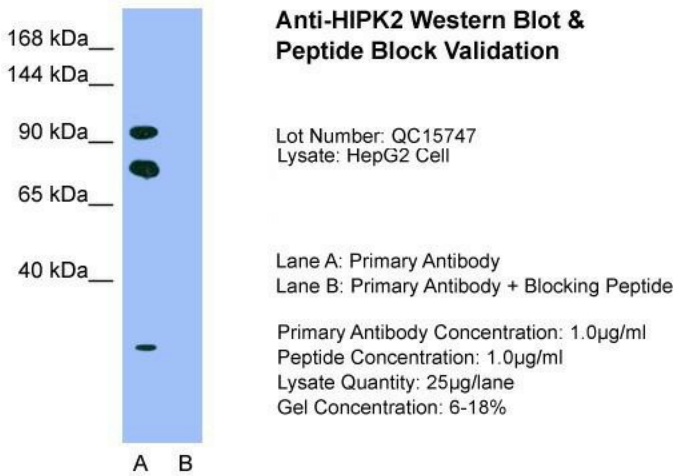
Product images:



WB Suggested Anti-HIPK2 Antibody Titration: 0.1ug/ml; Positive Control: Jurkat Cell Lysate



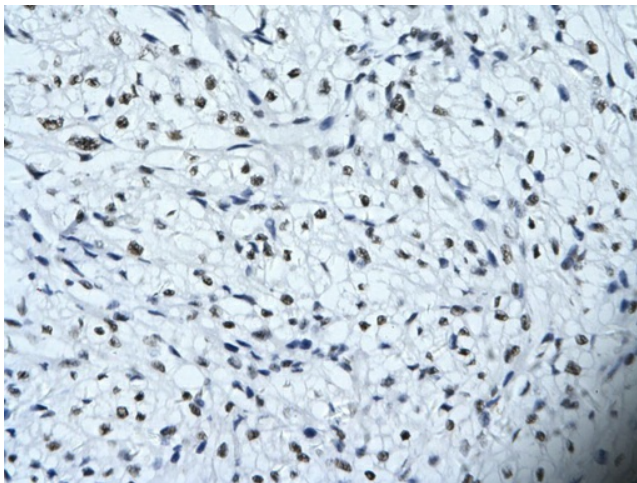
WB Suggested Anti-HIPK2 Antibody Titration: 0.06ug/ml; ELISA Titer: 1:62500; Positive Control: HepG2 cell lysate. HIPK2 is supported by BioGPS gene expression data to be expressed in HepG2



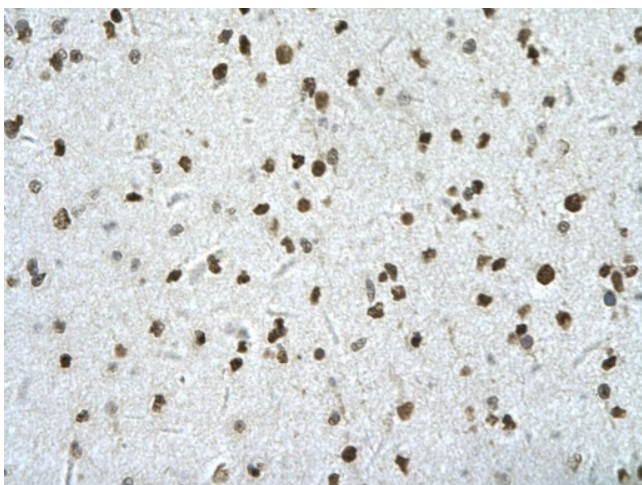
Host: Rabbit; Target Name: HIPK2; Sample Tissue: HepG2; Lane A: Primary Antibody; Lane B: Primary Antibody + Blocking Peptide ; Primary Antibody Concentration:1.0ug/mL; Peptide Concentration: 1.0ug/mL; Lysate Quantity: 25ug/lane; Gel Concentration: 6%-18%HI



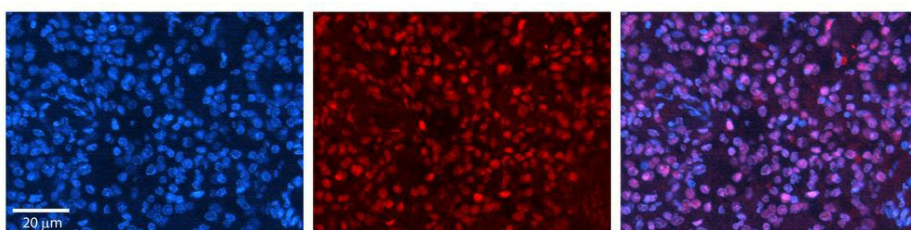
Rabbit Anti-HIPK2 Antibody; Paraffin Embedded Tissue: Human Heart; Cellular Data: Myocardial cells; Antibody Concentration: 4.0-8.0 ug/ml; Magnification: 400X



Rabbit Anti-HIPK2 Antibody; Paraffin Embedded Tissue: Human cardiac cell; Cellular Data: Epithelial cells of renal tubule; Antibody Concentration: 4.0-8.0 ug/ml; Magnification: 400X



Rabbit Anti-HIPK2 Antibody; Paraffin Embedded Tissue: Human neural cell; Cellular Data: Epithelial cells of renal tubule; Antibody Concentration: 4.0-8.0 ug/ml; Magnification: 400X



Rabbit Anti-HIPK2 Antibody; Formalin Fixed Paraffin Embedded Tissue: Human Pineal Tissue; Observed Staining: Nuclear in pinealocytes & interstitial cells; Primary Antibody Concentration: 1:100; Other Working Concentrations: 1/600; Secondary Antibody: Don