

## Product datasheet for **TA330615**

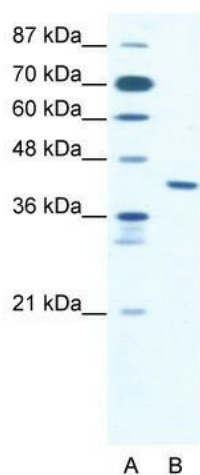
### ZNF621 Rabbit Polyclonal Antibody

#### Product data:

Product Type:	Primary Antibodies
Applications:	WB
Recommended Dilution:	WB
Reactivity:	Human
Host:	Rabbit
Isotype:	IgG
Clonality:	Polyclonal
Immunogen:	The immunogen for anti-ZNF621 antibody: synthetic peptide directed towards the middle region of human ZNF621. Synthetic peptide located within the following region: ECKEKGKGLSSNTALTQHQRHTGKPYECKEKGKAFRRSAAYLQHQLH
Formulation:	Liquid. Purified antibody supplied in 1x PBS buffer with 0.09% (w/v) sodium azide and 2% sucrose.
Conjugation:	Unconjugated
Storage:	Store at -20°C as received.
Stability:	Stable for 12 months from date of receipt.
Predicted Protein Size:	49 kDa
Gene Name:	zinc finger protein 621
Database Link:	<a href="#">NP_940886</a> <a href="#">Entrez Gene 285268 Human</a> <a href="#">Q6ZSS3</a>
Background:	ZNF621 is a candidate transcription factor
Synonyms:	DKFZp686B11107; FLJ23786; FLJ45246; MGC126668
Note:	Dog: 100%; Pig: 100%; Rat: 100%; Horse: 100%; Human: 100%; Mouse: 100%; Bovine: 100%; Rabbit: 100%; Guinea pig: 100%



[View online »](#)

**Product images:**

WB Suggested Anti-ZNF621 Antibody Titration:  
2.5ug/ml; ELISA Titer: 1:1562500; Positive Control:  
Jurkat cell lysate