

## Product datasheet for **TA330614**

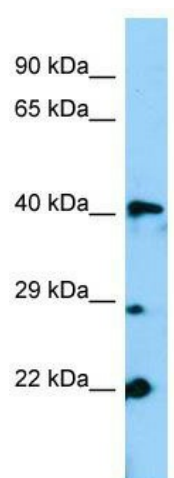
### Zfp982 Rabbit Polyclonal Antibody

#### Product data:

Product Type:	Primary Antibodies
Applications:	WB
Recommended Dilution:	WB
Reactivity:	Mouse
Host:	Rabbit
Isotype:	IgG
Clonality:	Polyclonal
Immunogen:	The immunogen for Anti-Gm13152 antibody is: synthetic peptide directed towards the N-terminal region of Mouse Gm13152. Synthetic peptide located within the following region: MSVFLVNT PQGLLTFKDVAVEFSLEEWERLSFAQRSLCIDVMLENYNLL
Formulation:	Liquid. Purified antibody supplied in 1x PBS buffer with 0.09% (w/v) sodium azide and 2% sucrose. <i>Note that this product is shipped as lyophilized powder to China customers.</i>
Conjugation:	Unconjugated
Storage:	Store at -20°C as received.
Stability:	Stable for 12 months from date of receipt.
Predicted Protein Size:	43 kDa
Gene Name:	predicted gene 13152
Database Link:	<a href="#">NP_001034298</a> <a href="#">Entrez Gene 195531 Mouse</a>
Background:	The function of this protein remains unknown.
Synonyms:	OTTMUSG00000010671
Note:	Dog: 100%; Human: 100%; Pig: 93%; Rat: 93%; Horse: 93%; Bovine: 93%; Mouse: 86%



[View online »](#)

**Product images:**

WB Suggested Anti-Gm13152 Antibody; Titration:  
1.0 ug/ml; Positive Control: Mouse Lung