

Product datasheet for **TA330613**

Mohawk homeobox (MKX) Rabbit Polyclonal Antibody

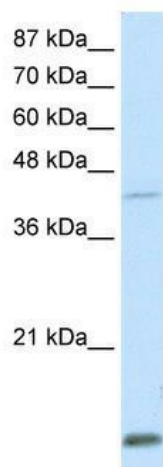
Product data:

Product Type:	Primary Antibodies
Applications:	IHC, WB
Recommended Dilution:	WB, IHC
Reactivity:	Human
Host:	Rabbit
Isotype:	IgG
Clonality:	Polyclonal
Immunogen:	The immunogen for anti-MKX antibody: synthetic peptide directed towards the middle region of human MKX. Synthetic peptide located within the following region: IKSENSVIKAGVRPESRASEDYVAPPKYKSSLLNRYLNDSLRHVMATNTT
Formulation:	Liquid. Purified antibody supplied in 1x PBS buffer with 0.09% (w/v) sodium azide and 2% sucrose.
Conjugation:	Unconjugated
Storage:	Store at -20°C as received.
Stability:	Stable for 12 months from date of receipt.
Predicted Protein Size:	39 kDa
Gene Name:	mohawk homeobox
Database Link:	NP_775847 Entrez Gene 283078 Human Q8IYA7
Background:	MKX contains 1 homeobox DNA-binding domain and belongs to the TALE/IRO homeobox family. It may act as a morphogenetic regulator of cell adhesion.
Synonyms:	C10orf48; IFRX; IRXL1
Note:	Human: 100%; Dog: 93%; Pig: 93%; Horse: 93%; Bovine: 93%; Rabbit: 93%; Guinea pig: 93%; Rat: 92%; Mouse: 92%; Zebrafish: 85%
Protein Families:	Transcription Factors

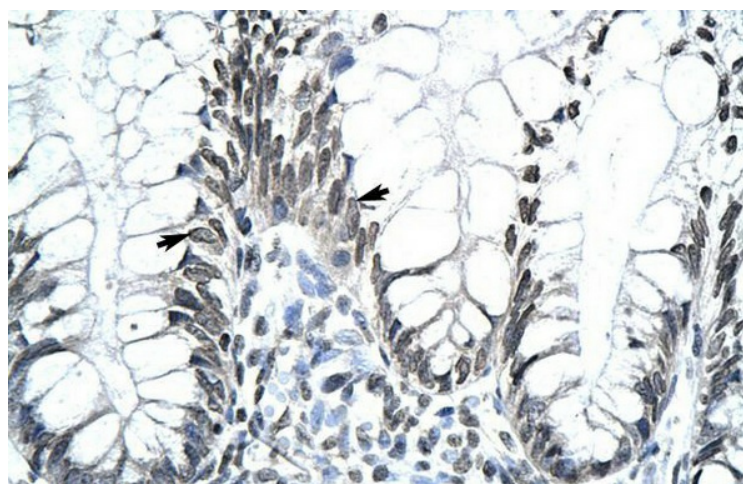


[View online »](#)

Product images:



WB Suggested Anti-MKX Antibody Titration: 0.2-1 ug/ml; Positive Control: Transfected 293T



Human Stomach