

Product datasheet for TA330612

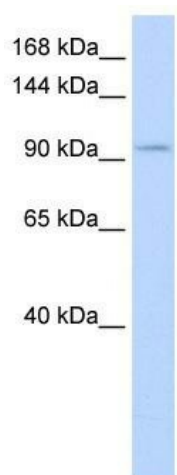
SALL3 Rabbit Polyclonal Antibody

Product data:

Product Type:	Primary Antibodies
Applications:	WB
Recommended Dilution:	WB
Reactivity:	Human
Host:	Rabbit
Isotype:	IgG
Clonality:	Polyclonal
Immunogen:	The immunogen for anti-SALL3 antibody: synthetic peptide directed towards the middle region of human SALL3. Synthetic peptide located within the following region: SVENSGESDRLSNDSSSAVGDLESRSAGSPALSESSSSQALSPAPSNGE
Formulation:	Liquid. Purified antibody supplied in 1x PBS buffer with 0.09% (w/v) sodium azide and 2% sucrose. <i>Note that this product is shipped as lyophilized powder to China customers.</i>
Conjugation:	Unconjugated
Storage:	Store at -20°C as received.
Stability:	Stable for 12 months from date of receipt.
Predicted Protein Size:	135 kDa
Gene Name:	spalt like transcription factor 3
Database Link:	NP_741996 Entrez Gene 27164 Human Q9BXA9
Background:	SALL3 belongs to the sal C2H2-type zinc-finger protein family. It contains 9 C2H2-type zinc fingers. SALL3 is a probable transcription factor.
Synonyms:	ZNF796
Note:	Dog: 100%; Pig: 100%; Rat: 100%; Horse: 100%; Human: 100%; Mouse: 100%; Rabbit: 100%; Guinea pig: 100%; Bovine: 79%; Zebrafish: 79%



[View online »](#)

Product images:

WB Suggested Anti-SALL3 Antibody Titration: 0.2-1 ug/ml; ELISA Titer: 1:62500; Positive Control: Human Placenta