

## Product datasheet for **TA330609**

### TAF5L Rabbit Polyclonal Antibody

#### Product data:

Product Type:	Primary Antibodies
Applications:	WB
Recommended Dilution:	WB
Reactivity:	Human
Host:	Rabbit
Isotype:	IgG
Clonality:	Polyclonal
Immunogen:	The immunogen for anti-TAF5L antibody: synthetic peptide directed towards the middle region of human TAF5L. Synthetic peptide located within the following region: CVKFHPNSNYLATGSTDKTVRLWSAQQGNSVRLFTGHRGPVLSLAFSPNG
Formulation:	Liquid. Purified antibody supplied in 1x PBS buffer with 0.09% (w/v) sodium azide and 2% sucrose. <i>Note that this product is shipped as lyophilized powder to China customers.</i>
Conjugation:	Unconjugated
Storage:	Store at -20°C as received.
Stability:	Stable for 12 months from date of receipt.
Predicted Protein Size:	66 kDa
Gene Name:	TATA-box binding protein associated factor 5 like
Database Link:	<a href="#">NP_001020418</a> <a href="#">Entrez Gene 27097 Human</a> <a href="#">O75529</a>



[View online »](#)

**Background:**

TAF5L functions as a component of the PCAF complex. The PCAF complex is capable of efficiently acetylating histones in a nucleosomal context. The PCAF complex could be considered as the human version of the yeast SAGA complex. The product of this gene belongs to the WD-repeat TAF5 family of proteins. This gene encodes a protein that is a component of the PCAF histone acetylase complex. The PCAF histone acetylase complex, which is composed of more than 20 polypeptides some of which are TAFs, is required for myogenic transcription and differentiation. TAFs may participate in basal transcription, serve as coactivators, function in promoter recognition or modify general transcription factors to facilitate complex assembly and transcription initiation. The encoded protein is structurally similar to one of the histone-like TAFs, TAF5. Alternatively spliced transcript variants encoding different isoforms have been identified for this gene.

**Synonyms:**

PAF65B

**Note:**

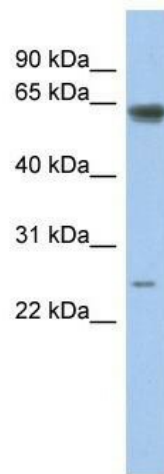
Dog: 100%; Pig: 100%; Rat: 100%; Horse: 100%; Human: 100%; Mouse: 100%; Bovine: 100%; Rabbit: 100%; Zebrafish: 100%; Guinea pig: 100%

**Protein Families:**

Transcription Factors

**Protein Pathways:**

Basal transcription factors

**Product images:**

WB Suggested Anti-TAF5L Antibody Titration: 0.2-1 ug/ml; ELISA Titer: 1:62500; Positive Control: Human Stomach