

## Product datasheet for **TA330608**

### SND1 Rabbit Polyclonal Antibody

#### Product data:

Product Type:	Primary Antibodies
Applications:	WB
Recommended Dilution:	WB
Reactivity:	Human
Host:	Rabbit
Isotype:	IgG
Clonality:	Polyclonal
Immunogen:	The immunogen for anti-SND1 antibody: synthetic peptide directed towards the N terminal of human SND1. Synthetic peptide located within the following region: LPDYLVTVMLSGIKCPTFRREADGSETPEPFAAEAKFFTESRLLQRDVQ
Formulation:	Liquid. Purified antibody supplied in 1x PBS buffer with 0.09% (w/v) sodium azide and 2% sucrose. <i>Note that this product is shipped as lyophilized powder to China customers.</i>
Conjugation:	Unconjugated
Storage:	Store at -20°C as received.
Stability:	Stable for 12 months from date of receipt.
Predicted Protein Size:	100 kDa
Gene Name:	staphylococcal nuclease and tudor domain containing 1
Database Link:	<a href="#">NP_055205</a> <a href="#">Entrez Gene 27044 Human</a> <a href="#">Q7KZF4</a>
Background:	SND1 was originally characterized as a transcriptional coactivator for Epstein-Barr virus nuclear antigen 2. It is a STAT6 TAD interacting protein containing staphylococcal nuclease (SN)-like domain and tudor domain. p100 . The interaction is mediated by the TAD domain of STAT6 and the SN-like domain of SND1. SND1 associates with the large subunit of RNA polymerase II and is mediating interaction between STAT6 and RNA polymerase II. It was identified as a novel coactivator for STAT6 and suggest its functions as a bridging factor between STAT6 and the basal transcription machinery



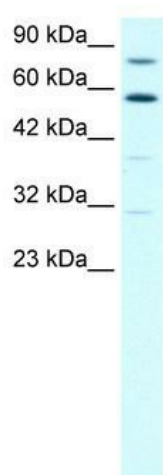
[View online »](#)

**Synonyms:** p100; TDRD11

**Note:** Dog: 100%; Pig: 100%; Rat: 100%; Horse: 100%; Human: 100%; Mouse: 100%; Bovine: 100%; Rabbit: 100%; Zebrafish: 100%; Guinea pig: 100%

**Protein Families:** Druggable Genome, Transcription Factors

### Product images:



WB Suggested Anti-SND1 Antibody Titration: 1.25ug/ml; Positive Control: Raji cell lysate. SND1 is supported by BioGPS gene expression data to be expressed in Raji