

Product datasheet for **TA330605**

HBP1 Rabbit Polyclonal Antibody

Product data:

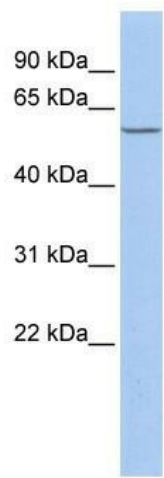
Product Type:	Primary Antibodies
Applications:	WB
Recommended Dilution:	WB
Reactivity:	Human
Host:	Rabbit
Isotype:	IgG
Clonality:	Polyclonal
Immunogen:	The immunogen for anti-HBP1 antibody: synthetic peptide directed towards the middle region of human HBP1. Synthetic peptide located within the following region: FSKNCGSPGSSQLSSNSLYAKAVKNHSSGTVSATSPNKCKRPMNAFMLFA
Formulation:	Liquid. Purified antibody supplied in 1x PBS buffer with 0.09% (w/v) sodium azide and 2% sucrose. <i>Note that this product is shipped as lyophilized powder to China customers.</i>
Conjugation:	Unconjugated
Storage:	Store at -20°C as received.
Stability:	Stable for 12 months from date of receipt.
Predicted Protein Size:	58 kDa
Gene Name:	HMG-box transcription factor 1
Database Link:	NP_036389 Entrez Gene 26959 Human O60381
Background:	HBP1 is a transcriptional repressor that binds to the promoter region of target genes. It plays a role in the regulation of the cell cycle and of the Wnt pathway. HBP1 binds preferentially to the sequence 5'-TTCATTCATTCA-3'.The protein also disrupts the interaction between DNA and TCF4.
Synonyms:	FLJ16340
Note:	Dog: 100%; Human: 100%; Rat: 93%; Horse: 93%; Mouse: 93%; Bovine: 93%; Rabbit: 93%; Pig: 85%; Guinea pig: 85%



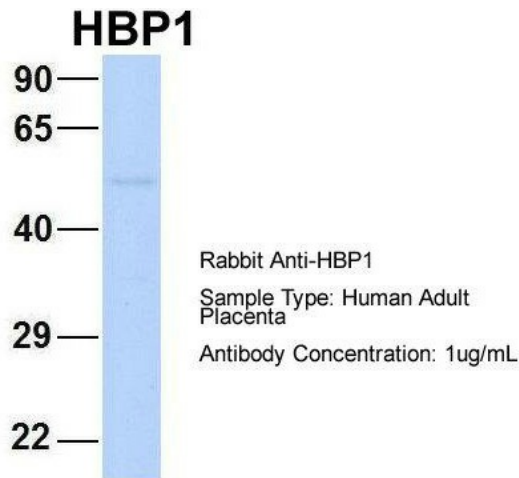
[View online »](#)

Protein Families: Transcription Factors

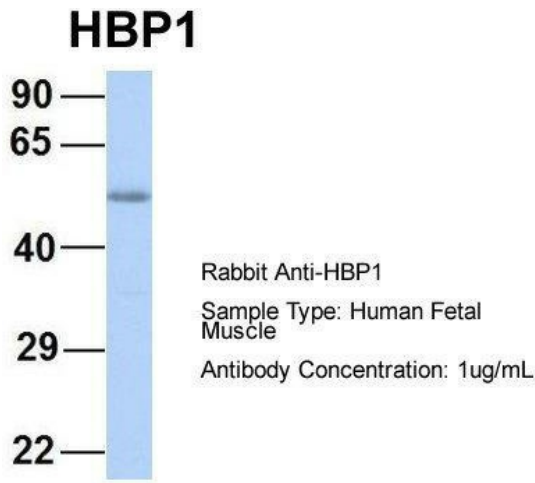
Product images:



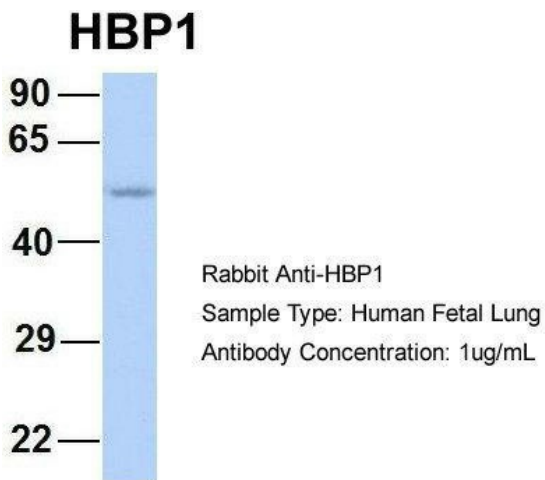
WB Suggested Anti-HBP1 Antibody Titration: 0.2-1 ug/ml; ELISA Titer: 1:62500; Positive Control: Jurkat cell lysate



2Hum. Adult Placenta; Host: Rabbit; Target Name: CHAD; Sample Tissue: Human Adult Placenta; Antibody Dilution: 1.0ug/ml



Host: Rabbit; Target Name: HBP1; Sample Tissue: Human Fetal Muscle; Antibody Dilution: 1.0ug/ml



Host: Rabbit; Target Name: HBP1; Sample Tissue: Human Fetal Lung; Antibody Dilution: 1.0ug/ml