

Product datasheet for **TA330604**

GF11 Rabbit Polyclonal Antibody

Product data:

Product Type:	Primary Antibodies
Applications:	WB
Recommended Dilution:	WB
Reactivity:	Human
Host:	Rabbit
Isotype:	IgG
Clonality:	Polyclonal
Immunogen:	The immunogen for anti-GF11 antibody: synthetic peptide directed towards the N terminal of human GF11. Synthetic peptide located within the following region: VPAPSRADSTSNAGGAKAEPDRRLSPESQLTEAPDRASASPDSCEGSVCE
Formulation:	Liquid. Purified antibody supplied in 1x PBS buffer with 0.09% (w/v) sodium azide and 2% sucrose. <i>Note that this product is shipped as lyophilized powder to China customers.</i>
Conjugation:	Unconjugated
Storage:	Store at -20°C as received.
Stability:	Stable for 12 months from date of receipt.
Predicted Protein Size:	45 kDa
Gene Name:	growth factor independent 1 transcriptional repressor
Database Link:	NP_005254 Entrez Gene 2672 Human Q99684



[View online »](#)

Background:

GFI1 may be a transcription factor involved in regulating the expression of genes active in the S phase during cell cycle progression in T-cells. GFI1 may be involved in tumor progression. Defects in GFI1 are a cause of autosomal dominant severe congenital neutropenia (SCN) and dominant nonimmune chronic idiopathic neutropenia of adults (NI-CINA) This gene encodes a nuclear zinc finger protein that functions as a transcriptional repressor. This protein plays a role in diverse developmental contexts, including hematopoiesis and oncogenesis. It functions as part of a complex along with other cofactors to control histone modifications that lead to silencing of the target gene promoters. Mutations in this gene cause autosomal dominant severe congenital neutropenia, and also dominant nonimmune chronic idiopathic neutropenia of adults, which are heterogeneous hematopoietic disorders that cause predispositions to leukemias and infections. Multiple alternatively spliced variants, encoding the same protein, have been identified for this gene.

Synonyms:

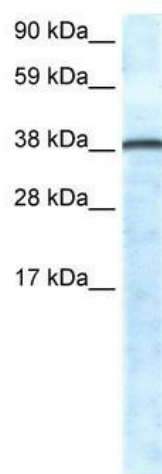
GFI-1; GFI1A; SCN2; ZNF163

Note:

Pig: 100%; Rat: 100%; Human: 100%; Bovine: 100%; Dog: 93%; Horse: 93%; Mouse: 93%; Guinea pig: 93%; Rabbit: 79%

Protein Families:

Druggable Genome, Transcription Factors

Product images:

WB Suggested Anti-GFI1 Antibody Titration: 0.2-1 ug/ml; ELISA Titer: 1:12500; Positive Control: Human Lung