

## Product datasheet for **TA330603**

### NPAS4 Rabbit Polyclonal Antibody

#### Product data:

Product Type:	Primary Antibodies
Applications:	WB
Recommended Dilution:	WB
Reactivity:	Human
Host:	Rabbit
Isotype:	IgG
Clonality:	Polyclonal
Immunogen:	The immunogen for anti-NPAS4 antibody: synthetic peptide directed towards the middle region of human NPAS4. Synthetic peptide located within the following region: QAHLDSPSQTFPEQLSPNPTKTYFAQEGCSFLYEKLPSPSSPANGDCTL
Formulation:	Liquid. Purified antibody supplied in 1x PBS buffer with 0.09% (w/v) sodium azide and 2% sucrose. <i>Note that this product is shipped as lyophilized powder to China customers.</i>
Conjugation:	Unconjugated
Storage:	Store at -20°C as received.
Stability:	Stable for 12 months from date of receipt.
Predicted Protein Size:	87 kDa
Gene Name:	neuronal PAS domain protein 4
Database Link:	<a href="#">NP_849195</a> <a href="#">Entrez Gene 266743 Human Q8IUM7</a>
Background:	NXF is a member of the basic helix-loop-helix-PER (MIM 602260)-ARNT (MIM 126110)-SIM (see SIM2; MIM 600892) (bHLH-PAS) class of transcriptional regulators, which are involved in a wide range of physiologic and developmental events. NXF is a member of the basic helix-loop-helix-PER (MIM 602260)-ARNT (MIM 126110)-SIM (see SIM2; MIM 600892) (bHLH-PAS) class of transcriptional regulators, which are involved in a wide range of physiologic and developmental events (Ooe et al., 2004 [PubMed 14701734]). [supplied by OMIM]
Synonyms:	bHLHe79; Le-PAS; NXF; PASD10

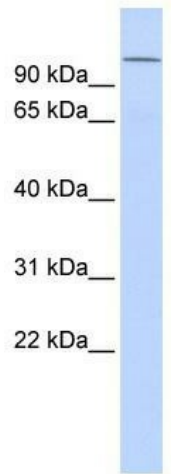


[View online >](#)

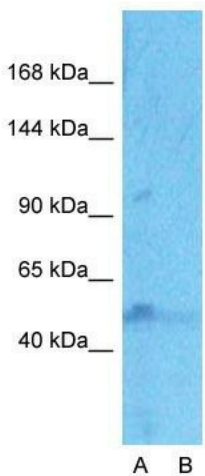
**Note:** Dog: 100%; Pig: 100%; Rat: 100%; Human: 100%; Mouse: 100%; Rabbit: 100%; Guinea pig: 93%; Horse: 86%; Sheep: 86%; Bovine: 86%

**Protein Families:** Druggable Genome, Transcription Factors

**Product images:**



WB Suggested Anti-NPAS4 Antibody Titration: 0.2-1 ug/ml; ELISA Titer: 1:312500; Positive Control: Human Lung



**Anti-NPAS4 Western Blot & Peptide Block Validation**

Lot Number: QC7270

Lysate: Fetal Lung

Lane A: Primary Antibody  
Lane B: Primary Antibody + Blocking Peptide

Primary Antibody Concentration: 1.0µg/ml  
Peptide Concentration: 5.0µg/ml  
Lysate Quantity: 25µg/lane  
Gel Concentration: 12%

Host: Rabbit; Target Name: NPAS4; Sample Tissue: Fetal Lung; Lane A: Primary Antibody; Lane B: Primary Antibody + Blocking Peptide ; Primary Antibody Concentration: 1ug/ml; Peptide Concentration: 5ug/ml; Lysate Quantity: 25ug/lane/Lane; Gel Concentration: 0.1