

Product datasheet for TA330602

GCNF (NR6A1) Rabbit Polyclonal Antibody

Product data:

Product Type:	Primary Antibodies
Applications:	WB
Recommended Dilution:	WB
Reactivity:	Human
Host:	Rabbit
Isotype:	IgG
Clonality:	Polyclonal
Immunogen:	The immunogen for anti-NR6A1 antibody: synthetic peptide directed towards the N terminal of human NR6A1. Synthetic peptide located within the following region: FCQDELAELDPGTISVSDDRAEQRTCLICGDRATGLHYGIISCEGCKGFF
Formulation:	Liquid. Purified antibody supplied in 1x PBS buffer with 0.09% (w/v) sodium azide and 2% sucrose. <i>Note that this product is shipped as lyophilized powder to China customers.</i>
Conjugation:	Unconjugated
Storage:	Store at -20°C as received.
Stability:	Stable for 12 months from date of receipt.
Predicted Protein Size:	54 kDa
Gene Name:	nuclear receptor subfamily 6 group A member 1
Database Link:	NP_001480 Entrez Gene 2649 Human Q15406
Background:	NR6A1 is an orphan nuclear receptor which is a member of the nuclear hormone receptor family. Its expression pattern suggests that it may be involved in neurogenesis and germ cell development. The protein can homodimerize and bind DNA, but in vivo targets have not been identified. This gene encodes an orphan nuclear receptor which is a member of the nuclear hormone receptor family. Its expression pattern suggests that it may be involved in neurogenesis and germ cell development. The protein can homodimerize and bind DNA, but in vivo targets have not been identified. The gene expresses at least alternatively spliced transcript variants.



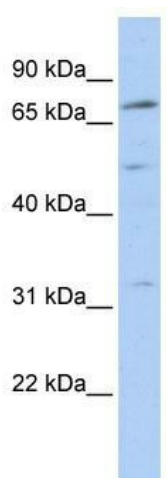
[View online »](#)

Synonyms: CT150; GCNF; GCNF1; hGCNF; hRTR; NR61; RTR

Note: Rat: 100%; Human: 100%; Mouse: 100%; Rabbit: 100%; Pig: 92%

Protein Families: Druggable Genome, ES Cell Differentiation/IPS, Transcription Factors

Product images:



WB Suggested Anti-NR6A1 Antibody Titration:
0.2-1 ug/ml; ELISA Titer: 1:312500; Positive
Control: MCF7 cell lysate