

Product datasheet for **TA330601**

LHX6 Rabbit Polyclonal Antibody

Product data:

Product Type:	Primary Antibodies
Applications:	IHC, WB
Recommended Dilution:	WB, IHC
Reactivity:	Human
Host:	Rabbit
Isotype:	IgG
Clonality:	Polyclonal
Immunogen:	The immunogen for anti-LHX6 antibody: synthetic peptide directed towards the C terminal of human LHX6. Synthetic peptide located within the following region: LSRRVIQVWFQNCRARHKKHTPQHPVPPSGAPPSRLPSALSDDIHYPFS
Formulation:	Liquid. Purified antibody supplied in 1x PBS buffer with 0.09% (w/v) sodium azide and 2% sucrose. <i>Note that this product is shipped as lyophilized powder to China customers.</i>
Conjugation:	Unconjugated
Storage:	Store at -20°C as received.
Stability:	Stable for 12 months from date of receipt.
Predicted Protein Size:	40 kDa
Gene Name:	LIM homeobox 6
Database Link:	NP_055183 Entrez Gene 26468 Human Q9UPM6
Background:	LHX6 is a member of a large protein family that contains the LIM domain, a unique cysteine-rich zinc-binding domain. The encoded protein may function as a transcriptional regulator and may be involved in the control of differentiation and development of neural and lymphoid cells.
Synonyms:	LHX6.1
Note:	Dog: 100%; Rat: 100%; Human: 100%; Pig: 93%; Mouse: 93%; Bovine: 93%; Guinea pig: 93%
Protein Families:	Transcription Factors

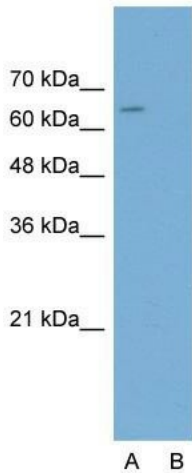


[View online »](#)

Product images:



WB Suggested Anti-LHX6 Antibody Titration: 1.0ug/ml; Positive Control: HepG2 cell lysate



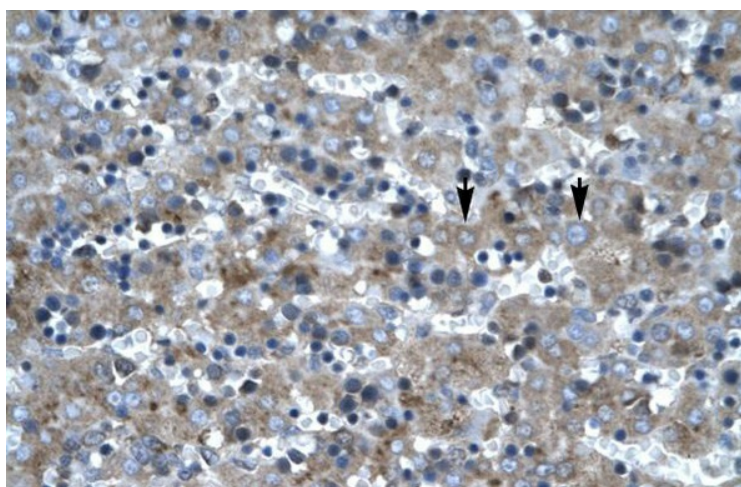
Anti-LHX6 Western Blot & Peptide Block Validation

Lot Number: QC2006
Lysate: HepG2 Cell

Lane A: Primary Antibody
Lane B: Primary Antibody + Blocking Peptide

Primary Antibody Concentration: 2.5µg/ml
Peptide Concentration: 2.0µg/ml
Lysate Quantity: 25µg/lane
Gel Concentration: 12%

Host: Rabbit; Target Name: LHX6; Sample Tissue: HepG2; Lane A: Primary Antibody; Lane B: Primary Antibody + Blocking Peptide ; Primary Antibody Concentration:2.5ug/mL; Peptide Concentration: 2.0ug/mL; Lysate Quantity: 25ug/lane; Gel Concentration: 12%



Human Liver