

## Product datasheet for **TA330599**

### GATA6 Rabbit Polyclonal Antibody

#### Product data:

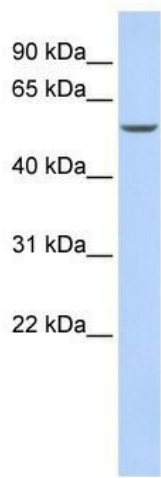
Product Type:	Primary Antibodies
Applications:	IF, WB
Recommended Dilution:	WB, IF
Reactivity:	Human
Host:	Rabbit
Isotype:	IgG
Clonality:	Polyclonal
Immunogen:	The immunogen for anti-GATA6 antibody: synthetic peptide directed towards the N terminal of human GATA6. Synthetic peptide located within the following region: PEEMYQTLAALSSQGPAAYDGAPGGFVHSAAAAAAAAAASSPVVYPTTR
Formulation:	Liquid. Purified antibody supplied in 1x PBS buffer with 0.09% (w/v) sodium azide and 2% sucrose. <i>Note that this product is shipped as lyophilized powder to China customers.</i>
Conjugation:	Unconjugated
Storage:	Store at -20°C as received.
Stability:	Stable for 12 months from date of receipt.
Predicted Protein Size:	60 kDa
Gene Name:	GATA binding protein 6
Database Link:	<a href="#">NP_005248</a> <a href="#">Entrez Gene 2627 Human</a> <a href="#">Q92908</a>
Background:	GATA6 is thought to be important for regulating terminal differentiation and/or proliferation.
Synonyms:	GATA-binding protein 6; GATA binding protein 6; transcription factor GATA-6
Note:	Dog: 100%; Pig: 100%; Rat: 100%; Human: 100%; Mouse: 100%; Bovine: 92%
Protein Families:	Embryonic stem cells, ES Cell Differentiation/IPS, Transcription Factors



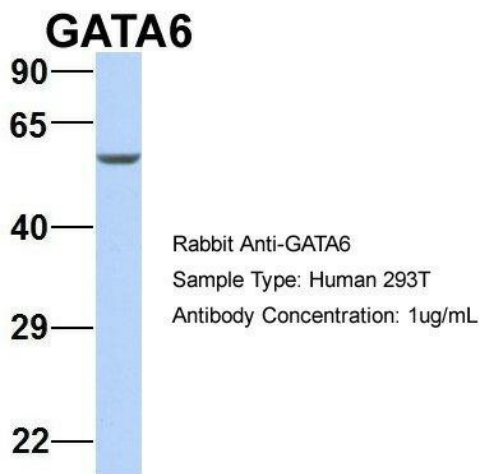
[View online »](#)

Product images:





WB Suggested Anti-GATA6 Antibody Titration: 0.2-1 ug/ml; ELISA Titer: 1:312500; Positive Control: 293T cell lysate. GATA6 is supported by BioGPS gene expression data to be expressed in HEK293T



Host: Rabbit; Target Name: GATA6; Sample Tissue: 293T; Antibody Dilution: 1.0ug/ml; GATA6 is supported by BioGPS gene expression data to be expressed in HEK293T



Embronic Stem Cells