

## Product datasheet for **TA330597**

### GATA3 Rabbit Polyclonal Antibody

#### Product data:

Product Type:	Primary Antibodies
Applications:	IF, IHC, WB
Recommended Dilution:	WB, IHC, IF
Reactivity:	Human
Host:	Rabbit
Isotype:	IgG
Clonality:	Polyclonal
Immunogen:	The immunogen for anti-GATA3 antibody: synthetic peptide directed towards the C terminal of human GATA3. Synthetic peptide located within the following region: RNRKMSSSKKCKKVHDSLEDFPKNSSFNPAALSRHMSSLSHISPFSSHSS
Formulation:	Liquid. Purified antibody supplied in 1x PBS buffer with 0.09% (w/v) sodium azide and 2% sucrose. <i>Note that this product is shipped as lyophilized powder to China customers.</i>
Conjugation:	Unconjugated
Storage:	Store at -20°C as received.
Stability:	Stable for 12 months from date of receipt.
Predicted Protein Size:	48 kDa
Gene Name:	GATA binding protein 3
Database Link:	<a href="#">NP_002042</a> <a href="#">Entrez Gene 2625 Human P23771</a>
Background:	Trans-acting T-cell specific transcription factor GATA-3 is a member of GATA family of transcription factors that regulates development of multiple tissues. It is an important transcription factor in regulating human Th2 cell differentiation in vivo.
Synonyms:	HDR; HDRS
Note:	Human: 100%; Dog: 93%; Pig: 93%; Rat: 93%; Horse: 93%; Mouse: 93%; Sheep: 93%; Bovine: 93%; Rabbit: 93%; Guinea pig: 93%



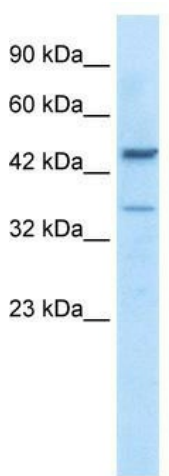
[View online »](#)

**Protein Families:** Adult stem cells, ES Cell Differentiation/IPS, Stem cell relevant signaling - JAK/STAT signaling pathway, Transcription Factors

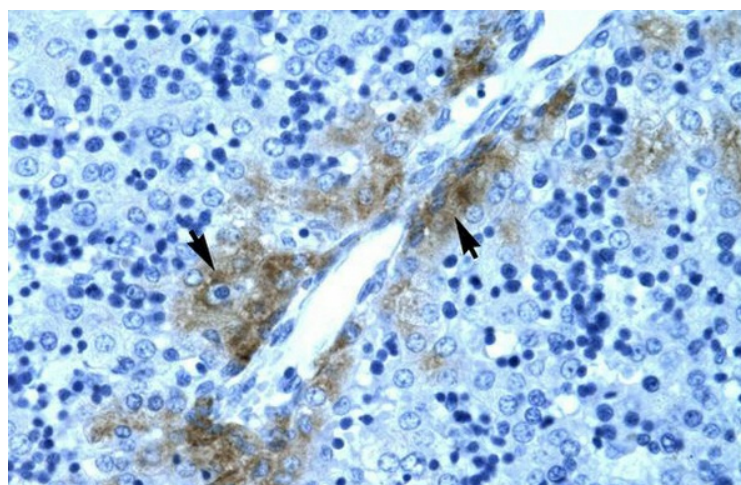
## Product images:



WB Suggested Anti-GATA3 Antibody Titration: 0.2-1 ug/ml; ELISA Titer: 1:312500; Positive Control: Jurkat cell lysate  
There is BioGPS gene expression data showing that GATA3 is expressed in Jurkat



WB Suggested Anti-GATA3 Antibody Titration: 0.2-1 ug/ml; Positive Control: Jurkat cell lysate  
There is BioGPS gene expression data showing that GATA3 is expressed in Jurkat



Rabbit Anti-GATA3 Antibody Paraffin Embedded  
Tissue: Human Liver Cellular Data: Hepatocyte  
Antibody Concentration: 4.0-8.0 ug/ml  
Magnification: 400X



Sample Type : Embronic Stem cell H1 to HNF4 cell  
line;