

Product datasheet for TA330595

HINFP Rabbit Polyclonal Antibody

Product data:

Product Type:	Primary Antibodies
Applications:	WB
Recommended Dilution:	WB
Reactivity:	Human
Host:	Rabbit
Isotype:	IgG
Clonality:	Polyclonal
Immunogen:	The immunogen for anti-MIZF antibody: synthetic peptide directed towards the middle region of human MIZF. Synthetic peptide located within the following region: FKDRSKLREHLRSHTQEKVVACPTCGGMFANNTKFLDHIRRQTSLDQQHF
Formulation:	Liquid. Purified antibody supplied in 1x PBS buffer with 0.09% (w/v) sodium azide and 2% sucrose. <i>Note that this product is shipped as lyophilized powder to China customers.</i>
Conjugation:	Unconjugated
Storage:	Store at -20°C as received.
Stability:	Stable for 12 months from date of receipt.
Predicted Protein Size:	60 kDa
Gene Name:	histone H4 transcription factor
Database Link:	NP_945322 Entrez Gene 25988 Human Q9BQA5
Background:	MIZF interacts with methyl-CpG-binding protein-2 (MBD2; MIM 603547), a component of the MeCP1 histone deacetylase (HDAC) complex, and plays a role in DNA methylation and transcription repression. MIZF interacts with methyl-CpG-binding protein-2 (MBD2; MIM 603547), a component of the MeCP1 histone deacetylase (HDAC) complex, and plays a role in DNA methylation and transcription repression. [supplied by OMIM]. PRIMARYREFSEQ_SPAN PRIMARY_IDENTIFIER PRIMARY_SPAN COMP 1-62 BF726036.1 1-62 63-1549 BC017234.2 47-1533 1550-2058 AK056362.1 1518-2026 2059-2202 BC001073.2 2085-2228



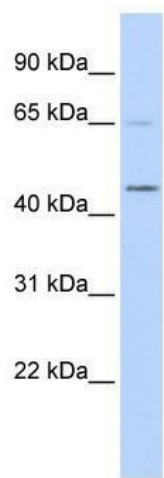
[View online »](#)

Synonyms: HiNF-P; MIZF; ZNF743

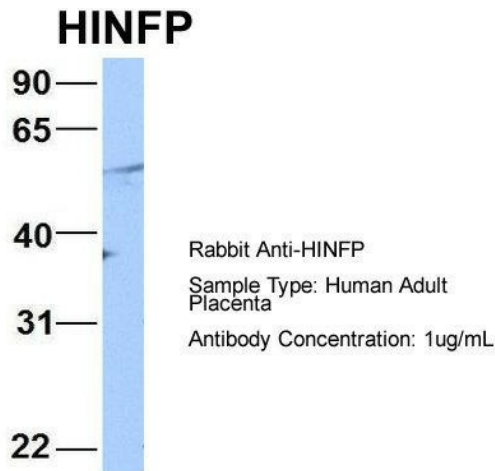
Note: Dog: 100%; Pig: 100%; Rat: 100%; Horse: 100%; Human: 100%; Mouse: 100%; Rabbit: 100%; Guinea pig: 100%; Bovine: 93%; Zebrafish: 92%

Protein Families: Transcription Factors

Product images:



WB Suggested Anti-MIZF Antibody Titration: 0.2-1 ug/ml; ELISA Titer: 1:12500; Positive Control: Transfected 293T



2Hum. Adult Placenta; Host: Rabbit; Target Name: CHAD; Sample Tissue: Human Adult Placenta; Antibody Dilution: 1.0ug/ml