

Product datasheet for TA330593

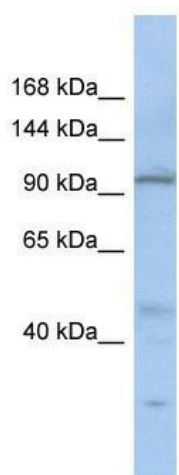
DNAAF9 Rabbit Polyclonal Antibody

Product data:

Product Type:	Primary Antibodies
Applications:	WB
Recommended Dilution:	WB
Reactivity:	Human
Host:	Rabbit
Isotype:	IgG
Clonality:	Polyclonal
Immunogen:	The immunogen for anti-C20orf194 antibody: synthetic peptide directed towards the N terminal of human C20orf194. Synthetic peptide located within the following region: SFAKHMVAQCVSPKGPLACSRTYFFGATHVPYLGGDSKLPPKTEQIRLLS
Formulation:	Liquid. Purified antibody supplied in 1x PBS buffer with 0.09% (w/v) sodium azide and 2% sucrose.
Conjugation:	Unconjugated
Storage:	Store at -20°C as received.
Stability:	Stable for 12 months from date of receipt.
Predicted Protein Size:	99 kDa
Gene Name:	chromosome 20 open reading frame 194
Database Link:	NP_001009984 Entrez Gene 25943 Human Q5TEA3
Background:	The exact functions of C20orf194 remain unknown.
Synonyms:	DKFZp434N061; MGC117480; MGC141683
Note:	Human: 100%; Bovine: 86%; Pig: 79%


[View online »](#)

Product images:



WB Suggested Anti-C20orf194 Antibody Titration:
0.2-1 ug/ml; ELISA Titer: 1:62500; Positive Control:
SH-SY5Y cell lysate