

Product datasheet for **TA330591**

POU2F3 Rabbit Polyclonal Antibody

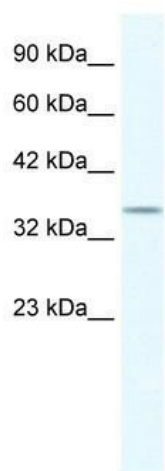
Product data:

Product Type:	Primary Antibodies
Applications:	IHC, WB
Recommended Dilution:	IHC, WB
Reactivity:	Human, Rat, Mouse
Host:	Rabbit
Isotype:	IgG
Clonality:	Polyclonal
Immunogen:	The immunogen for anti-POU2F3 antibody: synthetic peptide directed towards the N terminal of human POU2F3. Synthetic peptide located within the following region: KMSGDVADSTDARSTLSQVEPGNDRKGLDFNRQIKTEDLSDSLQQTLSHR
Formulation:	Liquid. Purified antibody supplied in 1x PBS buffer with 0.09% (w/v) sodium azide and 2% sucrose. <i>Note that this product is shipped as lyophilized powder to China customers.</i>
Conjugation:	Unconjugated
Storage:	Store at -20°C as received.
Stability:	Stable for 12 months from date of receipt.
Predicted Protein Size:	47 kDa
Gene Name:	POU class 2 homeobox 3
Database Link:	NP_055167 Entrez Gene 18988 Mouse Entrez Gene 116544 Rat Entrez Gene 25833 Human Q9UKI9
Background:	POU domain genes encode a family of highly conserved transacting factors that influence the transcriptional activity of several cell type-specific and ubiquitous genes. Studies have cloned and sequenced cDNAs encoding a novel mouse POU domain protein, Oct-11, that is closely related within the POU domain to the POU class II proteins, Oct-1 and Oct-2.
Synonyms:	Epoc-1; OCT-11; OCT11; OTF-11; PLA-1; PLA1; Skn-1a
Note:	Dog: 100%; Pig: 100%; Rat: 100%; Human: 100%; Mouse: 100%; Sheep: 100%; Rabbit: 100%; Guinea pig: 100%; Zebrafish: 77%



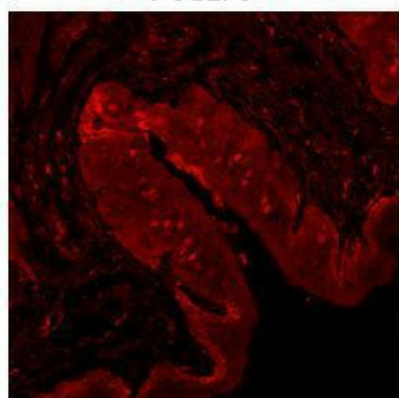
[View online »](#)

Product images:



WB Suggested Anti-POU2F3 Antibody; Titration:
1.25 ug/ml; Positive Control: HepG2 Whole Cell

POU2F3



Red: POU2F3

See IHC 1 Data and Customer Feedback for more Information

Sample Type : Mouse tongue tissue
Primary Antibody Dilution : 1:100
Secondary Antibody : Anti-rabbit-Cy3
Secondary Antibody Dilution : 1:500
Color/Signal Descriptions : Red:
POU2F3
Gene Name : POU2F3
Submitted by : Dr. Hong Wang, Monell Chemical Senses Center