

Product datasheet for **TA330589**

Nocturnin (NOCT) Rabbit Polyclonal Antibody

Product data:

Product Type:	Primary Antibodies
Applications:	IHC, WB
Recommended Dilution:	WB, IHC
Reactivity:	Human
Host:	Rabbit
Isotype:	IgG
Clonality:	Polyclonal
Immunogen:	The immunogen for anti-CCRN4L antibody: synthetic peptide directed towards the N terminal of human CCRN4L. Synthetic peptide located within the following region: LNSSAASQHPEYLVSPDPEHLEPIDPKELLEECRAVLHTRPPRFQRDFVD
Formulation:	Liquid. Purified antibody supplied in 1x PBS buffer with 0.09% (w/v) sodium azide and 2% sucrose.
Conjugation:	Unconjugated
Storage:	Store at -20°C as received.
Stability:	Stable for 12 months from date of receipt.
Predicted Protein Size:	48 kDa
Gene Name:	nocturnin
Database Link:	NP_036250 Entrez Gene 25819 Human Q9UK39
Background:	CCRN4L is highly similar to Nocturnin, a gene identified as a circadian clock regulated gene in <i>Xenopus laevis</i> . This protein and Nocturnin protein share similarity with the C-terminal domain of a yeast transcription factor, carbon catabolite repression 4 (CCR4). The mRNA abundance of a similar gene in mouse has been shown to exhibit circadian rhythmicity, which suggests a role for this protein in clock function or as a circadian clock effector.
Synonyms:	Ccr4c; CCR4L; CCRN4L; NOC
Note:	Pig: 100%; Horse: 100%; Human: 100%; Bovine: 100%; Guinea pig: 100%; Dog: 93%; Rat: 93%; Mouse: 93%; Rabbit: 93%

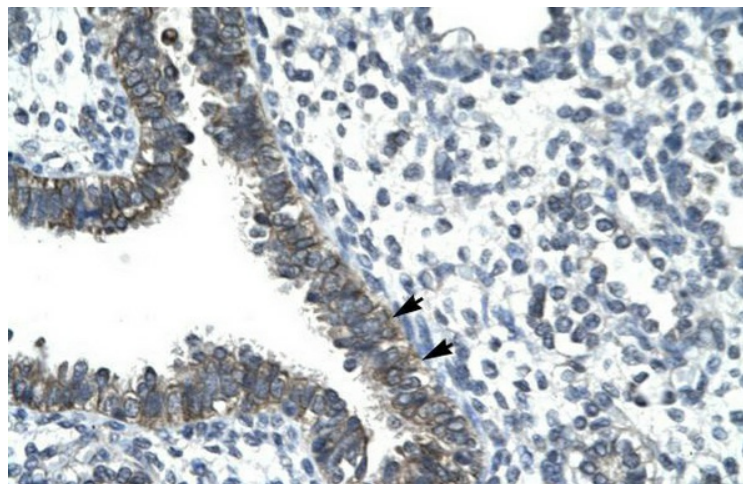


[View online »](#)

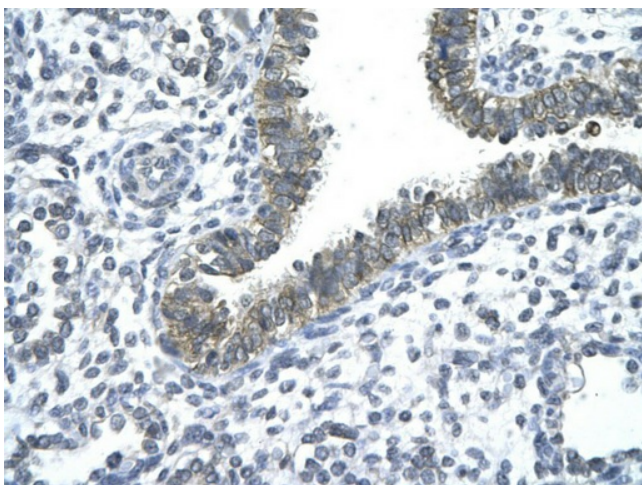
Product images:



WB Suggested Anti-CCRN4L Antibody Titration: 1.0-2.0ug/ml; Positive Control: Daudi cell lysate
CCRN4L is supported by BioGPS gene expression data to be expressed in Daudi



Human Lung



Rabbit Anti-CCRN4L antibody; Paraffin Embedded Tissue: Human Lung cell Cellular Data: bronchiole epithelium of renal tubule; Antibody Concentration: 4.0-8.0 ug/ml; Magnification: 400X