

Product datasheet for **TA330588**

SPDEF Rabbit Polyclonal Antibody

Product data:

Product Type:	Primary Antibodies
Applications:	WB
Recommended Dilution:	WB
Reactivity:	Human
Host:	Rabbit
Isotype:	IgG
Clonality:	Polyclonal
Immunogen:	The immunogen for anti-SPDEF antibody: synthetic peptide directed towards the N terminal of human SPDEF. Synthetic peptide located within the following region: AAKAPGASSREEPPEEPEQCVIDSQAPAGSLDLVPGGLTLEEHSLEQVQ
Formulation:	Liquid. Purified antibody supplied in 1x PBS buffer with 0.09% (w/v) sodium azide and 2% sucrose. <i>Note that this product is shipped as lyophilized powder to China customers.</i>
Conjugation:	Unconjugated
Storage:	Store at -20°C as received.
Stability:	Stable for 12 months from date of receipt.
Predicted Protein Size:	37 kDa
Gene Name:	SAM pointed domain containing ETS transcription factor
Database Link:	NP_036523 Entrez Gene 25803 Human O95238
Background:	PDEF is an ETS transcription factor expressed in prostate epithelial cells. It acts as an androgen-independent transactivator of PSA expression. PDEF is an ETS transcription factor expressed in prostate epithelial cells. It acts as an androgen-independent transactivator of PSA (MIM 176820) expression. [supplied by OMIM]. Publication Note: This RefSeq record includes a subset of the publications that are available for this gene. Please see the Entrez Gene record to access additional publications.
Synonyms:	bA375E1.3; PDEF

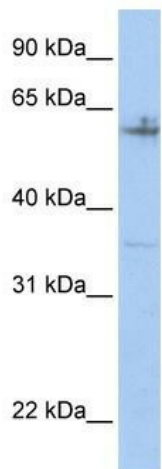


[View online »](#)

Note: Human: 100%; Rat: 93%; Dog: 92%; Pig: 92%; Bovine: 92%; Guinea pig: 92%; Rabbit: 86%; Horse: 85%

Protein Families: Transcription Factors

Product images:



WB Suggested Anti-SPDEF Antibody Titration: 0.2-1 ug/ml; ELISA Titer: 1:312500; Positive Control: Hela cell lysate