

Product datasheet for **TA330586**

Alx3 Rabbit Polyclonal Antibody

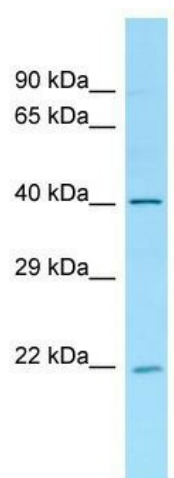
Product data:

Product Type:	Primary Antibodies
Applications:	WB
Recommended Dilution:	WB
Reactivity:	Rat
Host:	Rabbit
Isotype:	IgG
Clonality:	Polyclonal
Immunogen:	The immunogen for Anti-Alx3 antibody is: synthetic peptide directed towards the middle region of Rat Alx3. Synthetic peptide located within the following region: FPACGPLEPYLPEPAKPPAKYLQDLGPGPVLNNGGHFYEGSSEAEKASKA
Formulation:	Liquid. Purified antibody supplied in 1x PBS buffer with 0.09% (w/v) sodium azide and 2% sucrose.
Conjugation:	Unconjugated
Storage:	Store at -20°C as received.
Stability:	Stable for 12 months from date of receipt.
Predicted Protein Size:	37 kDa
Gene Name:	ALX homeobox 3
Database Link:	NP_001007013 Entrez Gene 365900 Rat
Background:	The function of this protein remains unknown.
Synonyms:	MGC138212; MGC141988
Note:	Human: 100%; Bovine: 100%; Rabbit: 100%; Pig: 93%; Rat: 93%; Horse: 93%; Mouse: 93%; Guinea pig: 93%



[View online »](#)

Product images:



WB Suggested Anti-Alx3 Antibody; Titration: 1.0 ug/ml; Positive Control: Rat Thymus