

Product datasheet for **TA330585**

PTF1A Rabbit Polyclonal Antibody

Product data:

Product Type:	Primary Antibodies
Applications:	WB
Recommended Dilution:	WB
Reactivity:	Human
Host:	Rabbit
Isotype:	IgG
Clonality:	Polyclonal
Immunogen:	The immunogen for anti-PTF1A antibody: synthetic peptide directed towards the N terminal of human PTF1A. Synthetic peptide located within the following region: PLEDGDELLADEQAEVEFLSHQLHEYCYRDGACLLLQPAPPAAPLALAPP
Formulation:	Liquid. Purified antibody supplied in 1x PBS buffer with 0.09% (w/v) sodium azide and 2% sucrose. <i>Note that this product is shipped as lyophilized powder to China customers.</i>
Conjugation:	Unconjugated
Storage:	Store at -20°C as received.
Stability:	Stable for 12 months from date of receipt.
Predicted Protein Size:	35 kDa
Gene Name:	pancreas specific transcription factor, 1a
Database Link:	NP_835455 Entrez Gene 256297 Human Q7RTS3



[View online »](#)

Background:

PTF1A is a pancreas specific transcription factor. Mammalian studies have implicated important roles for the basic helix-loop-helix transcription factor PTF1A-p48 in the development of both exocrine and endocrine pancreas. This gene encodes a protein that is a component of the pancreas transcription factor 1 complex (PTF1) and is known to have a role in mammalian pancreatic development. The protein plays a role in determining whether cells allocated to the pancreatic buds continue towards pancreatic organogenesis or revert back to duodenal fates. The protein is thought to be involved in the maintenance of exocrine pancreas-specific gene expression including elastase 1 and amylase. Mutations in this gene cause cerebellar agenesis and loss of expression is seen in ductal type pancreas cancers. Publication Note: This RefSeq record includes a subset of the publications that are available for this gene. Please see the Entrez Gene record to access additional publications.

Synonyms:

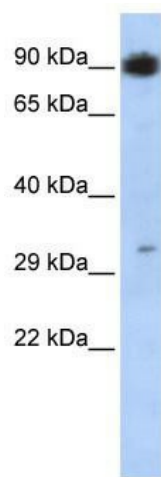
bHLHa29; PACA; PAGEN2; PTF1-p48

Note:

Pig: 100%; Horse: 100%; Human: 100%; Bovine: 100%; Dog: 93%; Rat: 93%; Mouse: 86%; Yeast: 75%

Protein Families:

Embryonic stem cells, ES Cell Differentiation/IPS

Product images:

WB Suggested Anti-PTF1A Antibody Titration: 0.2-1 ug/ml; ELISA Titer: 1:500; Positive Control: MCF7 cell lysate