

## Product datasheet for **TA330583**

### NR5A2 Rabbit Polyclonal Antibody

#### Product data:

Product Type:	Primary Antibodies
Applications:	WB
Recommended Dilution:	WB
Reactivity:	Human
Host:	Rabbit
Isotype:	IgG
Clonality:	Polyclonal
Immunogen:	The immunogen for anti-NR5A2 antibody: synthetic peptide directed towards the middle region of human NR5A2. Synthetic peptide located within the following region: LPPTDYDRSPFVTSPISMTMLHGSLQGYQTYGHFPSRAIKSEYDPYTSS
Formulation:	Liquid. Purified antibody supplied in 1x PBS buffer with 0.09% (w/v) sodium azide and 2% sucrose. <i>Note that this product is shipped as lyophilized powder to China customers.</i>
Conjugation:	Unconjugated
Storage:	Store at -20°C as received.
Stability:	Stable for 12 months from date of receipt.
Predicted Protein Size:	36 kDa
Gene Name:	nuclear receptor subfamily 5 group A member 2
Database Link:	<a href="#">NP_003813</a> <a href="#">Entrez Gene 2494 Human</a> <a href="#">O00482</a>
Background:	NR5A2 binds to the sequence element 5'-AACGACCGACCTTGAG-3' of the enhancer II of hepatitis B virus genes, a critical cis-element of their expression and regulation. It may be responsible for the liver-specific activity of enhancer II, probably in combination with other hepatocyte transcription factors. It is a key regulator of cholesterol 7-alpha-hydroxylase gene (CYP7A) expression in liver. It may also contribute to the regulation of pancreas-specific genes and play important roles in embryonic development.
Synonyms:	B1F; B1F2; CPF; FTF; FTZ-F1; FTZ-F1beta; hB1F-2; LRH-1; LRH1



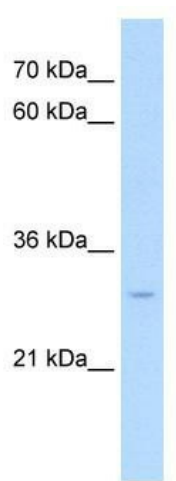
[View online »](#)

**Note:** Pig: 100%; Rat: 100%; Human: 100%; Guinea pig: 100%; Dog: 93%; Horse: 93%; Mouse: 93%; Bovine: 93%; Rabbit: 93%; Sheep: 86%; Zebrafish: 79%

**Protein Families:** Druggable Genome, Nuclear Hormone Receptor, Transcription Factors

**Protein Pathways:** Maturity onset diabetes of the young

### Product images:



WB Suggested Anti-NR5A2 Antibody Titration:  
0.2-1 ug/ml; Positive Control: HepG2 cell lysate