

Product datasheet for **TA330579**

PATZ1 Rabbit Polyclonal Antibody

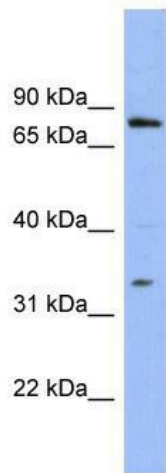
Product data:

Product Type:	Primary Antibodies
Applications:	WB
Recommended Dilution:	WB
Reactivity:	Human
Host:	Rabbit
Isotype:	IgG
Clonality:	Polyclonal
Immunogen:	The immunogen for anti-PATZ1 antibody: synthetic peptide directed towards the N terminal of human PATZ1. Synthetic peptide located within the following region: KNGGRFCDVLLRVGDESFPAHRAVLAACSEYFESVFSQAQLGDGGAADGGP
Formulation:	Liquid. Purified antibody supplied in 1x PBS buffer with 0.09% (w/v) sodium azide and 2% sucrose. <i>Note that this product is shipped as lyophilized powder to China customers.</i>
Conjugation:	Unconjugated
Storage:	Store at -20°C as received.
Stability:	Stable for 12 months from date of receipt.
Predicted Protein Size:	74 kDa
Gene Name:	POZ/BTB and AT hook containing zinc finger 1
Database Link:	NP_055138 Entrez Gene 23598 Human Q9HBE1
Background:	PATZ1 contains an A-T hook DNA binding motif which usually binds to other DNA binding structures to play an important role in chromatin modeling and transcription regulation. Its Poz domain is thought to function as a site for protein-protein interaction
Synonyms:	dj400N23; MAZR; PATZ; RIAZ; ZBTB19; ZNF278; ZSG
Note:	Dog: 100%; Pig: 100%; Rat: 100%; Horse: 100%; Human: 100%; Mouse: 100%; Bovine: 100%; Rabbit: 100%; Guinea pig: 100%
Protein Families:	Transcription Factors



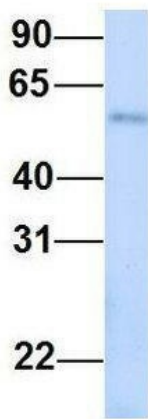
[View online »](#)

Product images:



WB Suggested Anti-PATZ1 Antibody Titration: 0.2-1 ug/ml; ELISA Titer: 1:312500; Positive Control: OVCAR-3 cell lysate

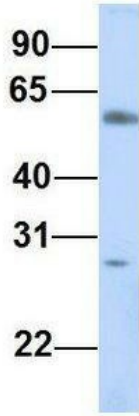
PATZ1



Rabbit Anti-PATZ1
 Sample Type: Human Adult Placenta
 Antibody Concentration: 1ug/mL

Host: Rabbit; Target Name: PATZ1; Sample Tissue: Human Adult Placenta; Antibody Dilution: 1.0ug/ml

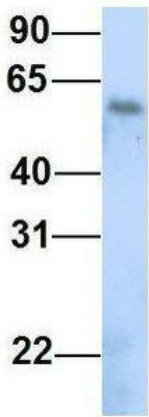
PATZ1



Rabbit Anti-PATZ1
Sample Type: Human Fetal Muscle
Antibody Concentration: 1ug/mL

Host: Rabbit; Target Name: PATZ1; Sample Tissue: Human Fetal Muscle; Antibody Dilution: 1.0ug/ml

PATZ1



Rabbit Anti-PATZ1
Sample Type: Human Fetal Lung
Antibody Concentration: 1ug/mL

Host: Rabbit; Target Name: PATZ1; Sample Tissue: Human Fetal Lung; Antibody Dilution: 1.0ug/ml