

Product datasheet for **TA330578**

SUZ12 Rabbit Polyclonal Antibody

Product data:

Product Type:	Primary Antibodies
Applications:	IHC, WB
Recommended Dilution:	WB, IHC, assay
Reactivity:	Human
Host:	Rabbit
Isotype:	IgG
Clonality:	Polyclonal
Immunogen:	The immunogen for anti-SUZ12 antibody: synthetic peptide directed towards the middle region of human SUZ12. Synthetic peptide located within the following region: TGETNDKSTAPIAKPLATRNSSESLHQENKPGSVKPTQTIAVKESLTTDLQ
Formulation:	Liquid. Purified antibody supplied in 1x PBS buffer with 0.09% (w/v) sodium azide and 2% sucrose. <i>Note that this product is shipped as lyophilized powder to China customers.</i>
Conjugation:	Unconjugated
Storage:	Store at -20°C as received.
Stability:	Stable for 12 months from date of receipt.
Predicted Protein Size:	83 kDa
Gene Name:	SUZ12 polycomb repressive complex 2 subunit
Database Link:	NP_056170 Entrez Gene 23512 Human Q15022



[View online »](#)

Background:

A chromosomal aberration involving SUZ12 may be a cause of endometrial stromal tumors. Translocation t (7;17)(p15;q21) with JAZF1 generates the JAZF1-SUZ12 oncogene consisting of the N-terminus part of JAZF1 and the C-terminus part of SUZ12. It is frequently found in all cases of endometrial stromal tumors, except in endometrial stromal sarcomas, where it is rarer. This zinc finger gene has been identified at the breakpoints of a recurrent chromosomal translocation reported in endometrial stromal sarcoma. Recombination of these breakpoints results in the fusion of this gene and JAZF1. The protein encoded by this gene contains a zinc finger domain in the C terminus of the coding region. The specific function of this gene has not yet been determined. Publication Note: This RefSeq record includes a subset of the publications that are available for this gene. Please see the Entrez Gene record to access additional publications.

Synonyms:

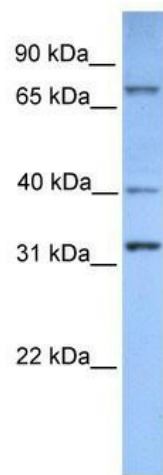
CHET9; JAZ1

Note:

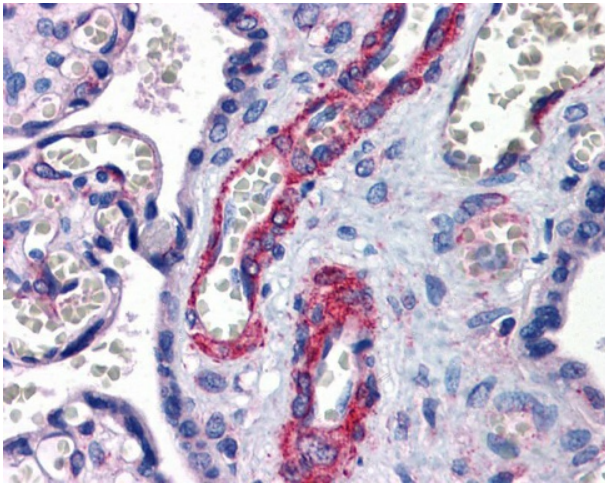
Dog: 100%; Pig: 100%; Rat: 100%; Horse: 100%; Human: 100%; Mouse: 100%; Bovine: 100%; Rabbit: 100%; Guinea pig: 93%

Protein Families:

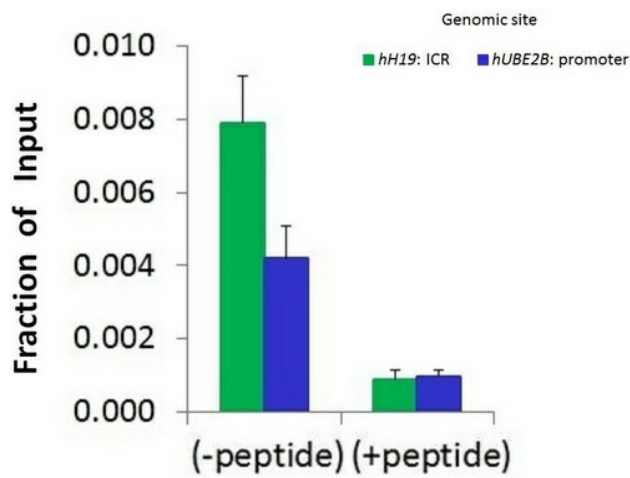
Transcription Factors

Product images:

WB Suggested Anti-SUZ12 Antibody Titration: 0.2-1 ug/ml; Positive Control: HeLa cell lysate. SUZ12 is strongly supported by BioGPS gene expression data to be expressed in Human HeLa cells



Placenta



Chromatin Immunoprecipitation (ChIP) Using SUZ12 antibody - middle region and HCT116 Cells