

## Product datasheet for **TA330576**

### HEY1 Rabbit Polyclonal Antibody

#### Product data:

Product Type:	Primary Antibodies
Applications:	IHC, WB
Recommended Dilution:	WB, IHC
Reactivity:	Human
Host:	Rabbit
Isotype:	IgG
Clonality:	Polyclonal
Immunogen:	The immunogen for Anti-HEY1 antibody is: synthetic peptide directed towards the C-terminal region of Human HEY1. Synthetic peptide located within the following region: PQNGHGNAGTTASPTPHHQRLGSAHPEAPALRAPPSGSGFPVLPVWTS
Formulation:	Liquid. Purified antibody supplied in 1x PBS buffer with 0.09% (w/v) sodium azide and 2% sucrose. <i>Note that this product is shipped as lyophilized powder to China customers.</i>
Conjugation:	Unconjugated
Storage:	Store at -20°C as received.
Stability:	Stable for 12 months from date of receipt.
Predicted Protein Size:	32 kDa
Gene Name:	hes related family bHLH transcription factor with YRPW motif 1
Database Link:	<a href="#">NP_036390</a> <a href="#">Entrez Gene 23462 Human</a> <a href="#">Q9Y5J3</a>
Background:	Hairy/enhancer of split-related proteins, such as HEY1, are basic helix-loop-helix (bHLH) transcription factors implicated in cell fate decision and boundary formation. HEY genes are direct transcriptional targets of the Notch signaling pathways in Drosophila and vertebrates.
Synonyms:	BHLHb31; CHF2; HERP2; HESR1; hHRT1; HRT-1; OAF1
Note:	Human: 100%; Pig: 93%; Rat: 93%; Horse: 93%; Mouse: 93%; Guinea pig: 93%; Dog: 86%; Bovine: 79%; Rabbit: 79%
Protein Families:	Druggable Genome, Transcription Factors



[View online »](#)

**Product images:**

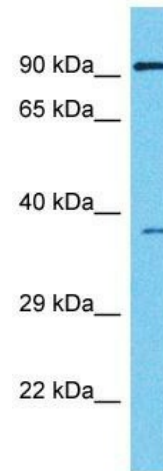


Rabbit Anti- HEY1 Antibody  
 Catalog Number: TA330576

Lane: Fetal Lung Lysate

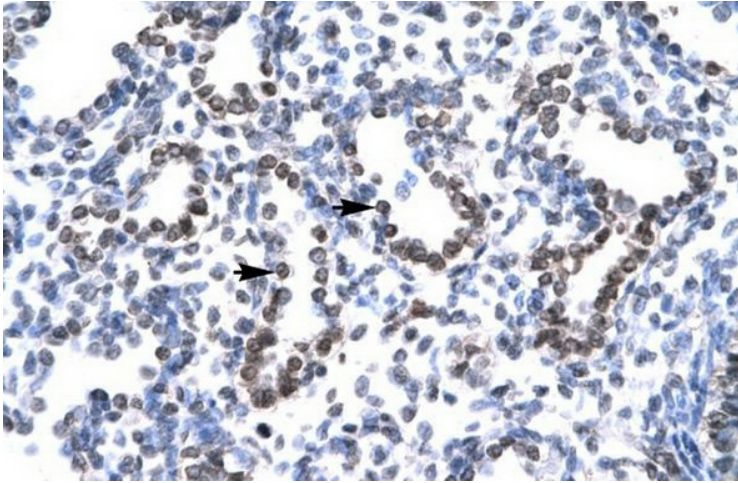
Antibody Titration: 1.2µg/ml  
 Gel Concentration: 12%

WB Suggested Anti-HEY1 Antibody; Titration:  
 2.5ug/ml; Positive Control: Lung

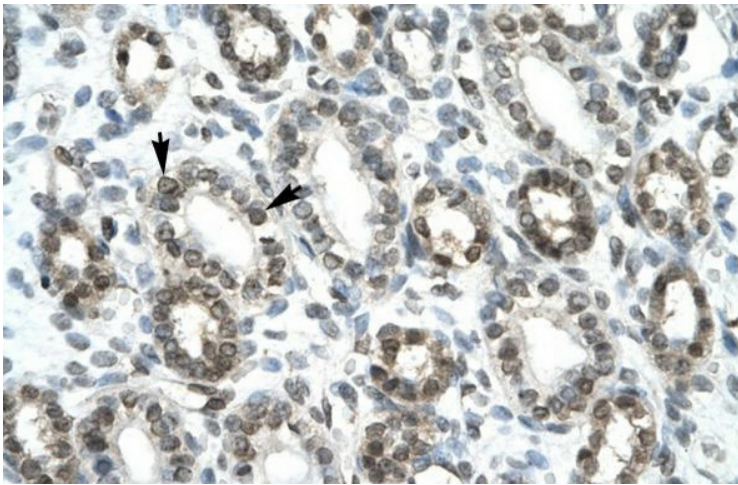


Host: Rabbit  
 Target Name: HEY1  
 Sample Tissue: HeLa Cell Lysate  
 Antibody Dilution: 1.0µg/ml

Host: Rabbit; Target Name: HEY1; Sample Tissue:  
 HeLa Whole Cell lysates; Antibody Dilution:  
 1.0ug/ml



Rabbit Anti-HEY1 Antibody; Paraffin Embedded Tissue: Human Lung; Cellular Data: Alveolar cells; Antibody Concentration: 4.0-8.0 ug/ml; Magnification: 400X



Rabbit Anti-HEY1 Antibody; Paraffin Embedded Tissue: Human Kidney; Cellular Data: Epithelial cells of renal tubule; Antibody Concentration: 4.0-8.0 ug/ml; Magnification: 400X