

## Product datasheet for **TA330574**

### ZC3H7B Rabbit Polyclonal Antibody

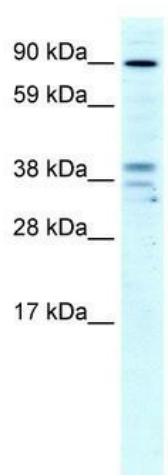
#### Product data:

Product Type:	Primary Antibodies
Applications:	WB
Recommended Dilution:	WB
Reactivity:	Human
Host:	Rabbit
Isotype:	IgG
Clonality:	Polyclonal
Immunogen:	The immunogen for anti-ZC3H7B antibody: synthetic peptide directed towards the N terminal of human ZC3H7B. Synthetic peptide located within the following region: YECSSRCSLALPHDESVTQLGQELAQKLGLRVRKAYKRPQELETFSLLSN
Formulation:	Liquid. Purified antibody supplied in 1x PBS buffer with 0.09% (w/v) sodium azide and 2% sucrose. <i>Note that this product is shipped as lyophilized powder to China customers.</i>
Conjugation:	Unconjugated
Storage:	Store at -20°C as received.
Stability:	Stable for 12 months from date of receipt.
Predicted Protein Size:	110 kDa
Gene Name:	zinc finger CCCH-type containing 7B
Database Link:	<a href="#">NP_060060</a> <a href="#">Entrez Gene 23264 Human</a> <a href="#">Q9UGR2</a>
Background:	ZC3H7B is a protein that contains a tetratricopeptide repeat domain. The encoded protein also interacts with the rotavirus non-structural protein NSP3.
Synonyms:	RoXaN
Note:	Dog: 100%; Pig: 100%; Horse: 100%; Human: 100%; Bovine: 100%; Rabbit: 100%; Guinea pig: 100%; Rat: 93%; Mouse: 93%



[View online »](#)

Product images:



WB Suggested Anti-ZC3H7B Antibody Titration:  
4ug/ml; Positive Control: Human Liver