

Product datasheet for **TA330573**

Capicua (CIC) Rabbit Polyclonal Antibody

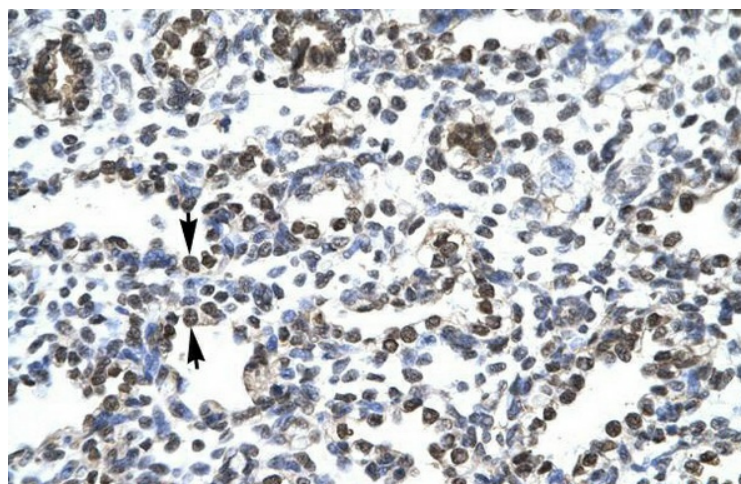
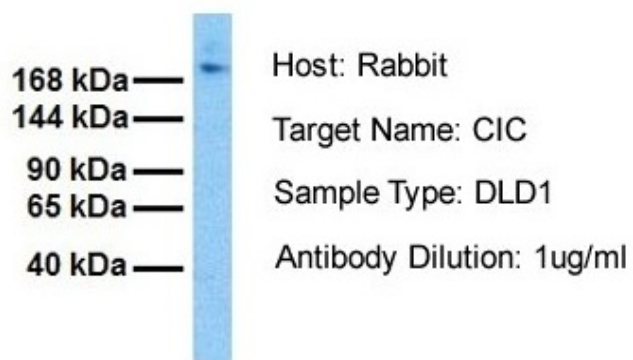
Product data:

Product Type:	Primary Antibodies
Applications:	IHC, WB
Recommended Dilution:	WB, IHC
Reactivity:	Human
Host:	Rabbit
Isotype:	IgG
Clonality:	Polyclonal
Immunogen:	The immunogen for anti-CIC antibody: synthetic peptide directed towards the N terminal of human CIC. Synthetic peptide located within the following region: PSQPDPSPVQPSEAQQPASHPVASNQSKEPAESA AVAHERPPGGTGSADPE
Formulation:	Liquid. Purified antibody supplied in 1x PBS buffer with 0.09% (w/v) sodium azide and 2% sucrose. <i>Note that this product is shipped as lyophilized powder to China customers.</i>
Conjugation:	Unconjugated
Storage:	Store at -20°C as received.
Stability:	Stable for 12 months from date of receipt.
Predicted Protein Size:	164 kDa
Gene Name:	capicua transcriptional repressor
Database Link:	NP_055940 Entrez Gene 23152 Human Q96RK0
Background:	Clon Channel represents a new subfamily of the HMG-box superfamily. Expression of the Cic gene is predominantly restricted to immature granule cells in the cerebellum, hippocampus and olfactory bulb in the CNS
Synonyms:	KIAA0306
Note:	Dog: 100%; Pig: 100%; Rat: 100%; Horse: 100%; Human: 100%; Mouse: 100%; Bovine: 100%; Rabbit: 100%; Guinea pig: 100%



[View online »](#)

Product images:



Human Lung