

Product datasheet for **TA330572**

GRIP1 Rabbit Polyclonal Antibody

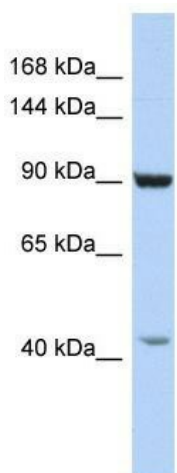
Product data:

Product Type:	Primary Antibodies
Applications:	WB
Recommended Dilution:	WB
Reactivity:	Human
Host:	Rabbit
Isotype:	IgG
Clonality:	Polyclonal
Immunogen:	The immunogen for anti-GRIP1 antibody: synthetic peptide directed towards the C terminal of human GRIP1. Synthetic peptide located within the following region: RQASFQERSSSRPHYSQTTRSNTLPSDVGRKSVTLRKMKEIKIMSPTP
Formulation:	Liquid. Purified antibody supplied in 1x PBS buffer with 0.09% (w/v) sodium azide and 2% sucrose. <i>Note that this product is shipped as lyophilized powder to China customers.</i>
Conjugation:	Unconjugated
Storage:	Store at -20°C as received.
Stability:	Stable for 12 months from date of receipt.
Predicted Protein Size:	92 kDa
Gene Name:	glutamate receptor interacting protein 1
Database Link:	NP_066973 Entrez Gene 23426 Human Q9Y3R0
Background:	GRIP1 may play a role as a localized scaffold for the assembly of a multiprotein signaling complex and as mediator of the trafficking of its binding partners at specific subcellular location in neurons.
Synonyms:	GRIP
Note:	Dog: 100%; Pig: 100%; Rat: 100%; Human: 100%; Mouse: 100%; Bovine: 100%; Rabbit: 100%; Guinea pig: 100%; Horse: 93%; Zebrafish: 79%
Protein Families:	Druggable Genome



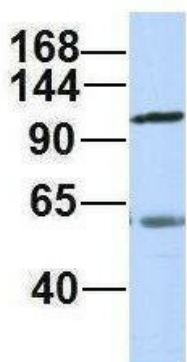
[View online »](#)

Product images:



WB Suggested Anti-GRIP1 Antibody Titration: 0.2-1 ug/ml; ELISA Titer: 1:312500; Positive Control: HepG2 cell lysate

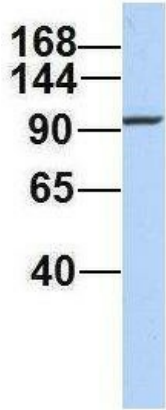
GRIP1



Rabbit Anti-GRIP1
 Sample Type: Human Adult Placenta
 Antibody Concentration: 1ug/mL

Host: Rabbit; Target Name: GRIP1; Sample Tissue: Human Adult Placenta; Antibody Dilution: 1.0ug/ml

GRIP1



Rabbit Anti-GRIP1
Sample Type: Human 721_B
Antibody Concentration: 1ug/mL

Host: Rabbit; Target Name: GRIP1; Sample Tissue: 721_B; Antibody Dilution: 1.0ug/ml; GRIP1 is supported by BioGPS gene expression data to be expressed in 721_B