

Product datasheet for **TA330571**

EHMT2/G9A (EHMT2) Rabbit Polyclonal Antibody

Product data:

Product Type:	Primary Antibodies
Applications:	WB
Recommended Dilution:	WB, assay
Reactivity:	Human
Host:	Rabbit
Isotype:	IgG
Clonality:	Polyclonal
Immunogen:	The immunogen for anti-EHMT2 antibody: synthetic peptide directed towards the N terminal of human EHMT2. Synthetic peptide located within the following region: VQSLAMRLLSMPGAQGAAAAGSEPPATTSPGQPKVHRARKTMSKPGNG
Formulation:	Liquid. Purified antibody supplied in 1x PBS buffer with 0.09% (w/v) sodium azide and 2% sucrose. <i>Note that this product is shipped as lyophilized powder to China customers.</i>
Conjugation:	Unconjugated
Storage:	Store at -20°C as received.
Stability:	Stable for 12 months from date of receipt.
Predicted Protein Size:	132 kDa
Gene Name:	euchromatic histone lysine methyltransferase 2
Database Link:	NP_006700 Entrez Gene 10919 Human Q96KQ7



[View online »](#)

Background:

A cluster of genes, BAT1-BAT5, has been localized in the vicinity of the genes for TNF alpha and TNF beta. This gene is found near this cluster; it was mapped near the gene for C2 within a 120-kb region that included a HSP70 gene pair. These genes are all within the human major histocompatibility complex class III region. This gene was thought to be two different genes, NG36 and G9a, adjacent to each other but a recent publication shows that there is only a single gene. The protein encoded by this gene is thought to be involved in intracellular protein-protein interaction. A cluster of genes, BAT1-BAT5, has been localized in the vicinity of the genes for TNF alpha and TNF beta. This gene is found near this cluster; it was mapped near the gene for C2 within a 120-kb region that included a HSP70 gene pair. These genes are all within the human major histocompatibility complex class III region. This gene was thought to be two different genes, NG36 and G9a, adjacent to each other but a recent publication shows that there is only a single gene. The protein encoded by this gene is thought to be involved in intracellular protein-protein interaction. There are three alternatively spliced transcript variants of this gene but only two are fully described.

Synonyms:

BAT8; C6orf30; G9A; GAT8; KMT1C; NG36

Note:

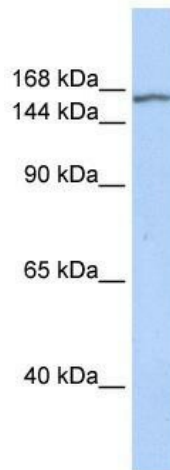
Human: 100%; Rabbit: 100%; Pig: 93%; Guinea pig: 93%; Bovine: 92%; Dog: 86%; Rat: 86%; Mouse: 79%; Horse: 77%

Protein Families:

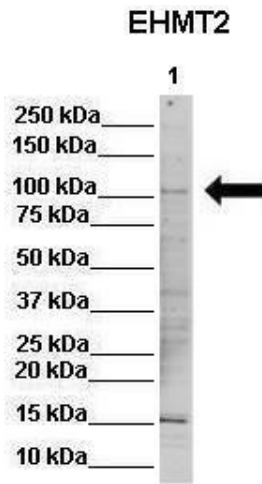
Druggable Genome

Protein Pathways:

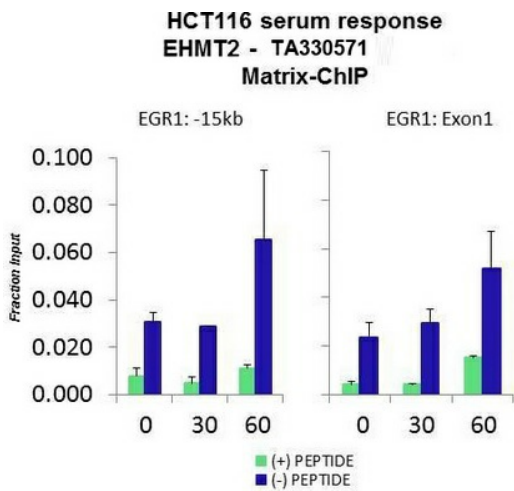
Lysine degradation

Product images:

WB Suggested Anti-EHMT2 Antibody Titration:
0.2-1 ug/ml; ELISA Titer: 1:312500; Positive
Control: Human Muscle



WB Suggested Anti-EHMT2 Antibody ; Positive Control: Lane 1: 30ug human RKO lysate; Primary Antibody Dilution : 1:1000; Secondary Antibody : Goat anti-rabbit-Alexa Fluor 680; Secondary Antibody Dilution : 1:5000; Submitted by: Dr. Syed Morshed



Quiescent human colon carcinoma HCT116 cultures were treated with 10% FBS for three time points (0, 15, 30min) or (0, 30, 60min) were used in Matrix-ChIP and real-time PCR assays at EGR1 gene (Exon1) and 15kb upstream site.