

## Product datasheet for **TA330565**

### COLEC12 Rabbit Polyclonal Antibody

#### Product data:

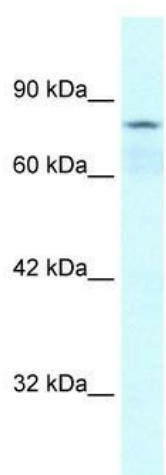
Product Type:	Primary Antibodies
Applications:	WB
Recommended Dilution:	WB
Reactivity:	Human
Host:	Rabbit
Isotype:	IgG
Clonality:	Polyclonal
Immunogen:	The immunogen for anti-COLEC12 antibody: synthetic peptide directed towards the middle region of human COLEC12. Synthetic peptide located within the following region: GLGGDGGGCGGGGSGGGGAPRREPVPFSPGSAGPGPRGPRATESGKRMDC
Formulation:	Liquid. Purified antibody supplied in 1x PBS buffer with 0.09% (w/v) sodium azide and 2% sucrose.
Conjugation:	Unconjugated
Storage:	Store at -20°C as received.
Stability:	Stable for 12 months from date of receipt.
Predicted Protein Size:	82 kDa
Gene Name:	collectin subfamily member 12
Database Link:	<a href="#">NP_569057</a> <a href="#">Entrez Gene 81035 Human</a> <a href="#">Q5KU26</a>
Background:	COLEC12 encodes a member of the C-lectin family, proteins that possess collagen-like sequences and carbohydrate recognition domains. This protein is a scavenger receptor, a cell surface glycoprotein that can bind to carbohydrate antigens on microorganisms facilitating their recognition and removal. In addition, these receptors can recognize oxidized phospholipids so they may also participate in removing oxidatively damaged or apoptotic cells.
Synonyms:	CLP1; NSR2; SCARA4; SRCL
Note:	Pig: 100%; Human: 100%; Rabbit: 100%; Guinea pig: 100%; Rat: 93%; Mouse: 93%



[View online »](#)

Protein Families: Transmembrane

### Product images:



WB Suggested Anti-COLEC12 Antibody Titration:  
0.2-1 ug/ml; Positive Control: Jurkat cell lysate