

Product datasheet for **TA330564**

mSin3A (SIN3A) Rabbit Polyclonal Antibody

Product data:

Product Type:	Primary Antibodies
Applications:	IHC, WB
Recommended Dilution:	WB, IHC
Reactivity:	Human
Host:	Rabbit
Isotype:	IgG
Clonality:	Polyclonal
Immunogen:	The immunogen for anti-SIN3A antibody: synthetic peptide directed towards the N terminal of human SIN3A. Synthetic peptide located within the following region: KRRLLDDQESPVYAAQRRIPGSTEAFPHQHRVLAPAPPVYEAVSETMQSA
Formulation:	Liquid. Purified antibody supplied in 1x PBS buffer with 0.09% (w/v) sodium azide and 2% sucrose.
Conjugation:	Unconjugated
Storage:	Store at -20°C as received.
Stability:	Stable for 12 months from date of receipt.
Predicted Protein Size:	145 kDa
Gene Name:	SIN3 transcription regulator family member A
Database Link:	NP_056292 Entrez Gene 25942 Human Q96ST3
Background:	SIN3A is a transcriptional regulatory protein. It contains paired amphipathic helix (PAH) domains, which are important for protein-protein interactions and may mediate repression by the Mad-Max complex. The protein encoded by this gene is a transcriptional regulatory protein. It contains paired amphipathic helix (PAH) domains, which are important for protein-protein interactions and may mediate repression by the Mad-Max complex. Publication Note: This RefSeq record includes a subset of the publications that are available for this gene. Please see the Entrez Gene record to access additional publications.
Synonyms:	WITKOS



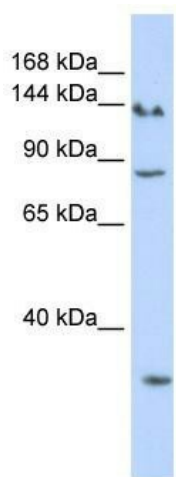
[View online »](#)

Note: Dog: 100%; Rat: 100%; Horse: 100%; Human: 100%; Mouse: 100%; Bovine: 100%; Pig: 92%; Rabbit: 92%; Guinea pig: 92%

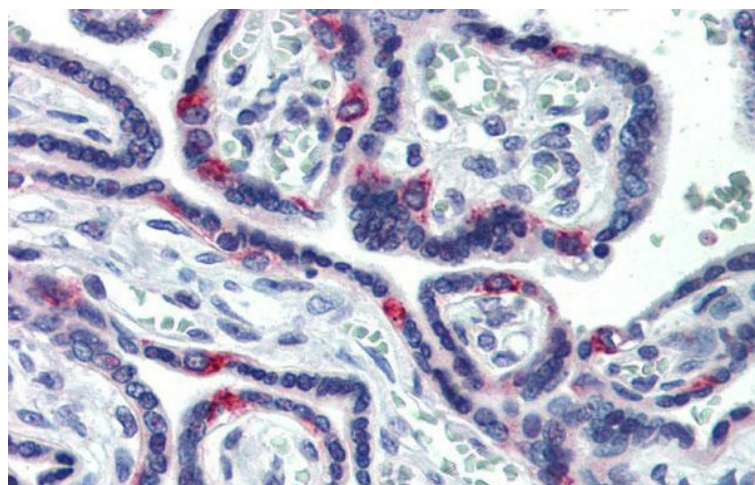
Protein Families: Druggable Genome, Transcription Factors

Protein Pathways: Huntington's disease

Product images:



WB Suggested Anti-SIN3A Antibody Titration: 0.2-1 ug/ml; ELISA Titer: 1:62500; Positive Control: Hela cell lysate



Immunohistochemistry with Human Placenta lysate tissue at an antibody concentration of 5.0ug/ml using anti-SIN3A antibody